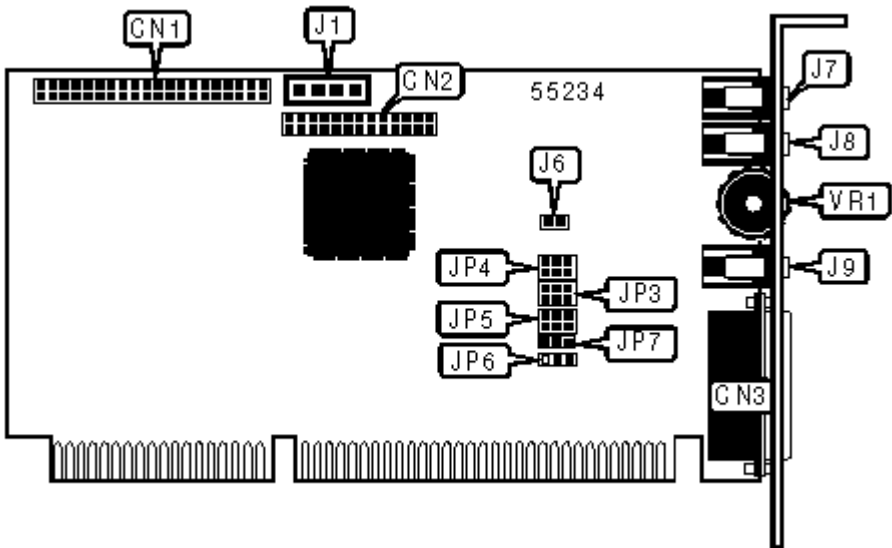


LABWAY CORPORATION

LABSOUND #500

Card Type	Sound card
Chip Set	Yamaha OPL3
Maximum Onboard Memory	Unidentified
I/O Options	Audio in - CD-ROM (2), wavetable, game/MIDI, IDE CD-ROM interface, PC speaker, microphone in, line in, speaker out, volume control
Data Bus	16-bit ISA
Card Size	Half-length, full-height card



CONNECTIONS

Function	Label	Function	Label
IDE CD-ROM interface	CN1	Microphone in	J7
Wavetable connector	CN2	Line in	J8
Game/MIDI port	CN3	Speaker out	J9
Audio in - CD-ROM	J1	Volume control	VR1
PC speaker	J6		

USER CONFIGURATION SETTINGS

Function	Label	Position
» Audio enable	JP6	Pins 1 & 2 closed
Audio disable	JP6	Pins 2 & 3 closed
» Joystick enable	JP7	Pins 1 & 2 closed
Joystick disable	JP7	Pins 2 & 3 closed

DMA CHANNEL SELECTION

	DMA	JP3
»	0	Pins 1 & 2, 5 & 6 closed
	1	Pins 2 & 3, 4 & 5 closed
	3	Pins 1 & 2, 4 & 5 closed
	None	Pins 2 & 3, 5 & 6 closed

AUDIO I/O PORT ADDRESS SELECTION

	Address	JP4
»	22X	Pins 2 & 3, 5 & 6 closed
	23X	Pins 1 & 2, 5 & 6 closed
	24X	Pins 2 & 3, 4 & 5 closed
	25X	Pins 1 & 2, 5 & 6 closed

AUDIO INTERRUPT SELECTION

	IRQ	JP5
	5	Pins 1 & 2, 5 & 6 closed
	7	Pins 2 & 3, 4 & 5 closed
	9	Pins 2 & 3, 5 & 6 closed
	10	Pins 1 & 2, 4 & 5 closed