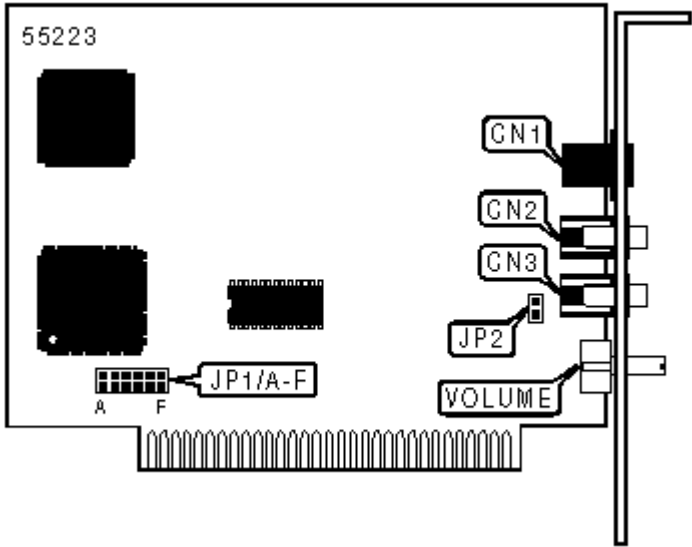


LC 144 VFI

Card Type	Modem
Chip Set	Unidentified
I/O Options	Analog phone port (RJ-11), microphone in, speaker jack
Maximum Data Rate	56Kbps
Maximum Fax Rate	14.4Kbps
Fax Class	Class I & II
Data Modulation Protocol	Bell 103A/212A
	ITU-T V.21, V.22, V.22bis, V.23, V.32, V.32bis
Fax Modulation Protocol	ITU-T V.17, V.21CH2, V.27ter, V.29
Error Correction/Compression	MNP5, V.42, V.42bis
Data Bus	8-bit ISA



CONNECTIONS

Function	Label	Function	Label
Phone port (RJ-11)	CN1	Speaker jack	CN3
Microphone jack	CN2		

ADDRESS SELECTION

Setting	JP1/A	JP1/B
COM1 (3F8h)	Closed	Closed
COM2 (2F8h)	Closed	Open
COM3 (3E8h)	Open	Closed
COM4 (2E8h)	Open	Open

INTERRUPT SELECTION

IRQ	JP1/C	JP1/D	JP1/E	JP1/F
3	Closed	Open	Open	Open
4	Open	Closed	Open	Open
5	Open	Open	Closed	Open
7	Open	Open	Open	Closed

SUPPORTED COMMAND SET

Basic AT Commands

- AT, A/
- A, B, E, M, P, Q, T, V, W, X, Y, Z
- &C, &F, &R, &T, &V, &W, &X, &Y, &Z

Extended AT Commands

- \A, \G, \J, \K, \L, \N
- %C, %F

S Registers

- S0, S1, S2, S3, S4, S5, S6, S7, S8, S9, S10, S11, S12, S14, S16,S18, S24, S25, S26
- S29, S30, S31, S32, S33, S38, S40, S95

V.25bis Commands

- CIC, CRI, CRN, CRS, DIC, PRI, PRN, RLN

Note: See MHI Help File for full command documentation.

Proprietary AT Command Set

For a full command summary, see CREATIX POLYMEDIA, LC 144 VF