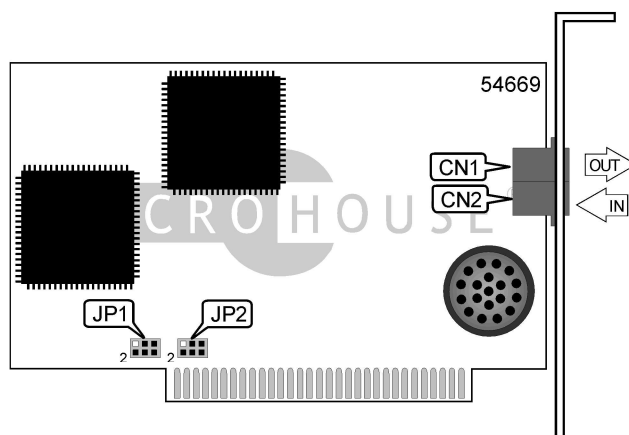


ZOOM TELEPHONICS, INC.

28.8K INTERNAL V.34

Card Type	Modem, Fax
Chip Set	Unidentified
I/O Options	Line in(RJ-11), line out (RJ-11)
Maximum Modem Rate	28.8Kbps
Maximum Fax Rate	14.4Kbps
Data Modulation Protocol	Bell 103A/212A, ITU-T V.21, V.22, V.22bis,V.23, V.32, V.32bis, V.34
Fax Modulation Protocol	V.17, V.21, CH2, V.27ter, V.29, V.33
Error Correction/Compression	MNP5, MNP10, V.42, V.42bis
Fax Class	Class I & II
Data Bus	8-bit ISA
Card Size	Half-length



CONNECTIONS			
Function	Label	Function	Label
Line out (RJ-11)	CN1	Line in (RJ-11)	CN2

SERIAL PORT ADDRESS			
Setting	JP1		JP2
COM1 (3F8h)	Pins 3 & 5, 4 & 6 closed		Pins 2 & 4 closed
COM2 (2F8h)	Pins 1 & 3, 4 & 6 closed		Pins 1 & 3 closed
COM3 (3E8h)	Pins 3 & 5, 2 & 4 closed		Pins 2 & 4 closed
COM4 (2E8h)	Pins 1 & 3, 2 & 4 closed		Pins 1 & 3 closed

Continued on next page . . .

ZOOM TELEPHONICS, INC.

28.8K INTERNAL V.34

. . . continued from previous page

SUPPORTED COMMAND SET	
Basic AT Commands	
AT, A/	
A, B, E, H, M, O, P, Q, T, V, W, X, Y, Z	
&C, &K, &M, &T, &W, &Y, &Z	
Extended AT Commands	
%C, %L, %Q	
\A, \B, \G, \L, \N	
)M	
*H	
-K, -Q	
:E	
+MS	
S Registers	
S0, S1, S2, S3, S4, S5, S6, S7, S8, S9, S10, S11, S12, S14, S16, S18, S21, S22, S23, S24	
S25, S26, S27, S28, S29, S31, S32, S33, S38, S40, S41	
Note: See MHI Help File for full command documentation.	

For a full command summary, see ZOOM TELEPHONICS, INC. 28.8K EXTERNAL V.34.