

DIAMOND FLOWER, INC.

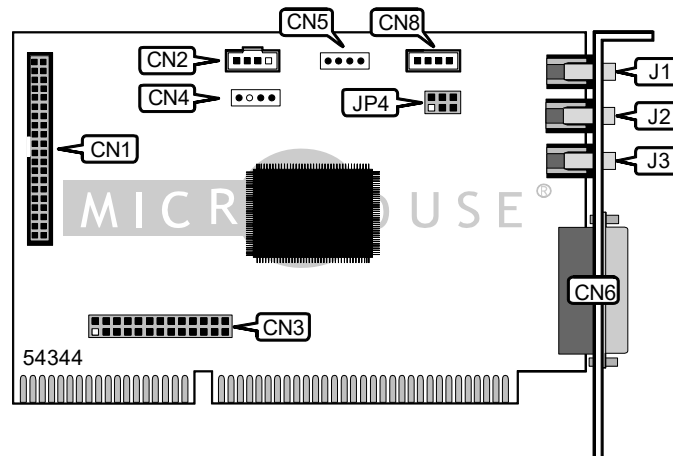
ESC - 16

Card Type
Chip Set
I/O Options

Data Bus
Card Size

Sound card
ESS

Game/MIDI port, CD-ROM Interface, wavetable connector, speaker/line out, line in, microphone in, audio in - CD-ROM, speaker in
16-bit ISA
Half-length



CONNECTIONS			
Function	Label	Function	Label
CD-ROM Interface	CN1	Game/MIDI port	CN6
Unidentified	CN2	Unidentified	CN8
Wavetable connector	CN3	Speaker/line out	J1
Speaker in	CN4	Line in	J2
Audio in - CD-ROM (Mitsumi)	CN5	Microphone in	J3

USER CONFIGURABLE SETTINGS		
Function	Label	Position
J1 is Speaker out	JP4	Pins 1&3, 2&4 closed
J1 is Line out	JP4	Pins 3&5, 4&6 closed