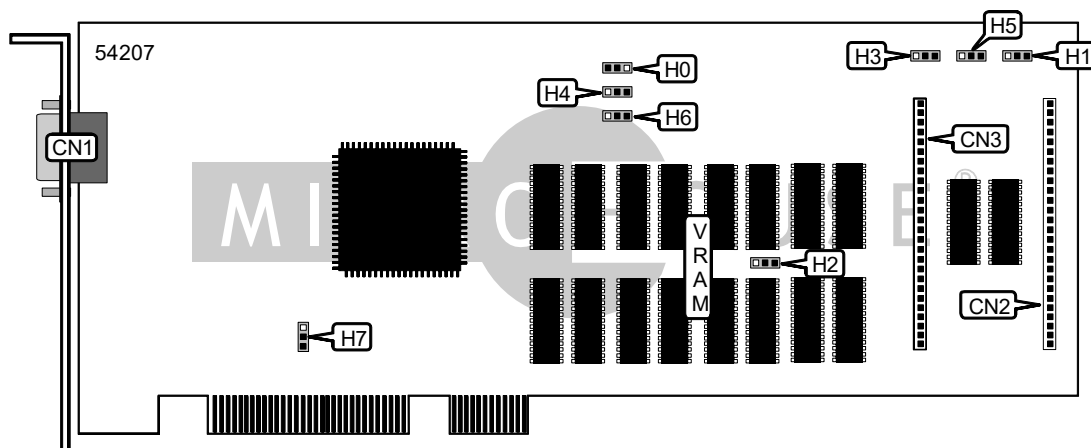


ACCEL GRAPHICS, INC.

ACCELPRO 1000, ACCELPRO 1500

ACCELPRO 2000, ACCELPRO 2500

Card Type	Video Accelerator
Video Chip Set	Unidentified
Maximum Video Memory	8MB VRAM Framebuffer, 8MB DRAM Localbuffer
Video Types Supported	VGA
Highest Resolution Supported	1280 X 1024
Data Bus	32-bit PCI



CONNECTIONS			
Function	Label	Function	Label
15-pin analog video port	CN1	Header connector to memory upgrade module	CN3
Header connector to memory upgrade module	CN2		

USER CONFIGURABLE SETTINGS			
Function	Label	Position	
VGA enabled	H7	Pins 1 & 2 closed	
VGA disabled	H7	Pins 2 & 3 closed	

VIDEO MEMORY JUMPER CONFIGURATION									
Model	VRAM	DRAM	H0	H1	H2	H3	H4	H5	H6
1000	4MB	4MB	1 & 2	1 & 2	1 & 2	1 & 2	1 & 2	1 & 2	1 & 2
1500	4MB	8MB	1 & 2	1 & 2	1 & 2	2 & 3	2 & 3	2 & 3	2 & 3
2000	8MB	4MB	1 & 2	1 & 2	2 & 3	1 & 2	1 & 2	1 & 2	1 & 2
2500	8MB	8MB	1 & 2	1 & 2	2 & 3	2 & 3	2 & 3	2 & 3	2 & 3

Note: Pins designated are in the closed position.

Continued on next page . . .

ACCEL GRAPHICS, INC.
ACCELPRO 1000, ACCELPRO 1500
ACCELPRO 2000, ACCELPRO 2500

. . . continued from previous page

MISCELLANEOUS TECHNICAL NOTES

AccelPRO 1000 contains 4MB of VRAM and 4MB of DRAM memory located on the back of the board.

AccelPRO 1500 contains 4MB of VRAM and 4MB of DRAM memory located on the back of the board, plus an additional 4MB DRAM on the memory upgrade module.

AccelPRO 2000 contains 4MB of VRAM and 4MB of DRAM memory located on the back of the board, and 4 MB of VRAM located on the front of the board

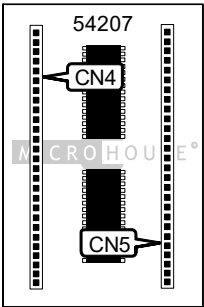
AccelPRO 2500 contains 4MB of VRAM and 4MB of DRAM memory located on the back of the board, and 4 MB of VRAM located on the front of the board plus an additional 4MB DRAM on the memory upgrade module

Continued on next page . . .

ACCEL GRAPHICS, INC.
ACCELPRO 1000, ACCELPRO 1500
ACCELPRO 2000, ACCELPRO 2500

. . . continued from previous page

Card Type	Memory upgrade module
Maximum Video Memory	4MB DRAM Localbuffer



ACCELPRO LOCALBUFFER MODULE

CONNECTIONS			
Function	Label	Function	Label
Header connector to main board	CN4	Header connector to main board	CN5

MISCELLANEOUS TECHNICAL NOTES	
Chips located on both sides of the board.	