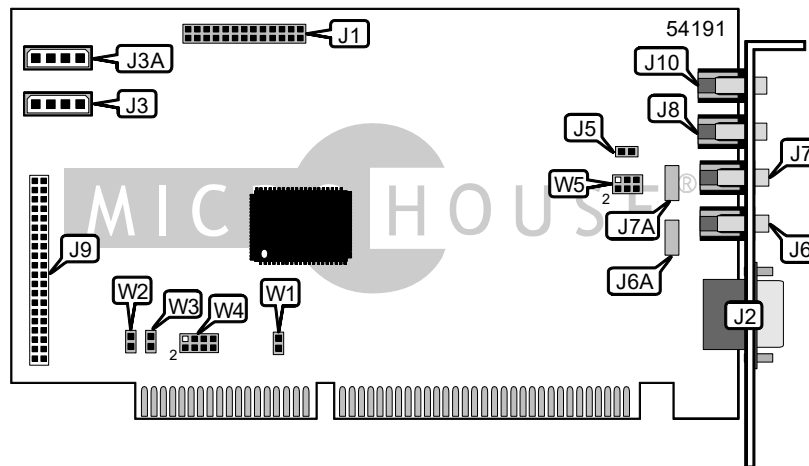


MEDIAFORTE PRODUCTS PTE, LTD.

SF16FMP

Card Type	Sound card
Chip Set	Creative Tech
Maximum Onboard Memory	Unidentified
I/O Options	CD-ROM interface, game port, IDE interface
Data Bus	16-bit ISA
Card Size	Three-quarter length



CONNECTIONS			
Function	Label	Function	Label
Wave table daughter card connector	J1	Speaker/line out	J6A
Game/MIDI port	J2	Microphone in	J7
Audio in CD-ROM	J3	Microphone in	J7A
Audio in CD-ROM	J3A	Line in	J8
PC speaker in	J5	CD-ROM interface IDE	J9
Speaker/line out	J6	Antenna jack	J10
Note: J6A and J7A are used to connect the SF16-FMP to the MPC front panel of PCs equipped with multimedia casting.			

USER CONFIGURABLE SETTINGS		
Function	Label	Position
Speaker out on J6 & J6A	W5	Pins 1 & 3, 2 & 4 closed
Line out on J6 & J6A	W5	Pins 3 & 5, 4 & 6 closed

FM RADIO I/O ADDRESS SELECTION	
Setting	W1
284h	Open
384h	Closed

IDE PORT SELECTION		
Port	W2	W3
Disabled	Closed	Closed
Secondary	Open	Closed
Tertiary	Closed	Open
Quarternary	Open	Open

Continued on next page . . .

SF16FMP

. . . continued from previous page

IRQ INTERRUPT SELECTION	
IRQ	W4
IRQ10	Pins 7 & 8 closed
IRQ11	Pins 5 & 6 closed
IRQ12	Pins 3 & 4 closed
IRQ15	Pins 1 & 2 closed

MISCELLANEOUS TECHNICAL NOTES
The SF16-FMP supports the WaveBlaster daughter card.