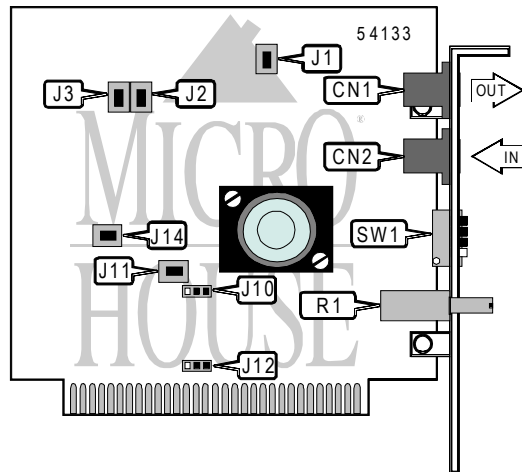


3COM CORPORATION
VARMODEM 1200

Modem Type	Data (synchronous/asynchronous)
Maximum Data Rate	1200bps
Data Bus	8-bit ISA
Data Modulation Protocol	Bell 103A/212A ITU-T V.21, V.22



CONNECTIONS			
Purpos	Location	Purpos	Location
Line out	CN1	Volume	R1
Line in	CN2		

MULTI-LINE INSTALLATION	
Setting	J1
í Single modem	Off
Multi-line	On

TRANSMISSION FORMAT	
Setting	J2
í 10-bit	Off
11-bit	On

RESET	
Setting	J14
í Enabled	Off
Disabled	N/A

FACTORY CONFIGURED SETTINGS	
Jumper	Setting
J3	On

Continued on next page . . .

3COM CORPORATION
VARMODEM 1200

...continued from previous page

BASE I/O ADDRESS SELECTION		
Port	J10	J11
COM1: (3F8h)	Pins 2 & 3 closed	Off
COM2: (2F8h)	Pins 2 & 3 closed	On
COM3: (3E8h)	Pins 1 & 2 closed	Off
COM4: (2E8h)	Pins 1 & 2 closed	ON

INTERRUPT SELECTION	
IRQ	J12
3	Pins 2 & 3 closed
4	Pins 1 & 2 closed

AUTO ANSWER	
Setting	SW1/1
Off	Modem answers on first ring
On	Modem does not answer on first ring

CARRIER DETECT	
Setting	SW1/2
Off	CD normal
On	CD forced high

PBX MODE	
Setting	SW1/3
Off	Normal dial up line equalization
On	PBX operation

DTR SIGNAL	
Setting	SW1/4
Off	DTR normal
On	DTR forced high