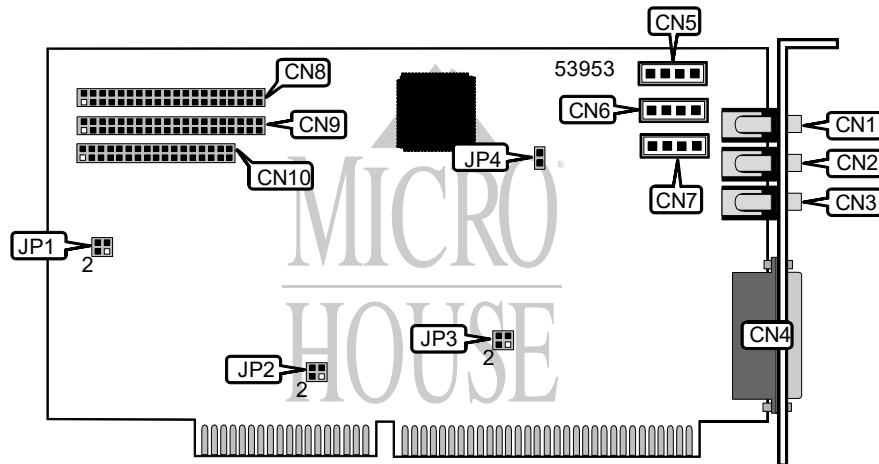


REVEAL COMPUTER PRODUCTS

SC600 WAVE32 (REV. 3)

Card Type	Sound card
Chip Set	Unidentified
Maximum Onboard Memory	None
I/O Options	Line in, microphone in, speaker out, game/MIDI port, audio in - CD-ROM (3), CD-ROM interfaces (4)
Data Bus	16-bit ISA



CONNECTIONS			
Function	Label	Function	Label
Line in	CN1	Audio in - CD-ROM	CN6
Speaker out	CN2	Audio in - CD-ROM	CN7
Microphone in	CN3	CD-ROM interface (Panasonic)	CN8
Game/MIDI port	CN4	CD-ROM interface (Mitsumi)	CN9
Audio in - CD-ROM	CN5	CD-ROM interface (Sony)	CN10

USER CONFIGURABLE SETTINGS		
Function	Label	Position
Microphone type select condenser	JP4	Closed
Microphone type select carbon	JP4	Open

MIDI ADDRESS SELECTION	
Address	JP2
330	Pins 3 & 4 closed
340	Pins 1 & 2 closed
350	Open

Continued on next page. . .

REVEAL COMPUTER PRODUCTS

SC600 WAVE32 (REV. 3)

. . . continued from previous page

WAVE ADDRESS SELECTION	
Address	JP3
608	Pins 3 & 4 closed
E84	Pins 1 & 2, 3 & 4 closed
F44	Open

CD-ROM SELECTION	
Type	JP1
Mitsumi	Pins 3 & 4 closed
Sony	Pins 1 & 2 closed
None	Open