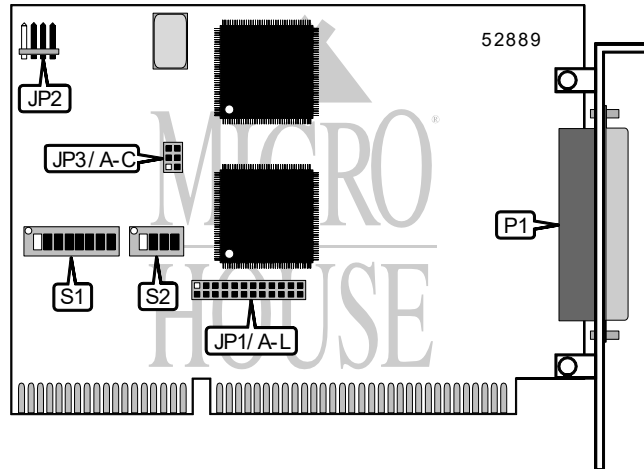


GLOBETEK, INC.

S-1008

Card Type
Chipset
I/O Options
Data Bus

Serial
 Startech ST16C554D
 Serial ports (8)
 16-bit ISA



CONNECTIONS			
Function	Label	Function	Label
Serial ports via DB-78 connector	P1	External interrupt connector (see pinout below)	JP2
Note: Standard DB-9 serial ports are provided on an included adapter cable.			

JP2 PINOUT			
Function	Pin	Function	Pin
Interrupt positive out	1	Interrupt positive in	3
Interrupt negative out	2	Interrupt negative in	4

USER CONFIGURABLE SETTINGS			
Setting	Label	Position	
í Status register enabled	S2/3	On	
Status register disabled	S2/3	Off	
í Interrupt mask register enabled	S2/4	On	
Interrupt mask register disabled	S2/4	Off	

Continued on next page. . .

... continued from previous page

BASE I/O ADDRESS SELECTION					
Setting	SW1/1	SW1/2	SW1/3	SW1/4	SW1/5
0000h	On	On	On	On	On
0040h	On	On	On	On	On
0080h	On	On	On	On	On
00C0h	On	On	On	On	On
0100h	On	On	On	On	On
i 0180h	On	On	On	On	On
FEC0h	Off	Off	Off	Off	Off
FF00h	Off	Off	Off	Off	Off
FF40h	Off	Off	Off	Off	Off
FF80h	Off	Off	Off	Off	Off
FFC0h	Off	Off	Off	Off	Off

BASE I/O ADDRESS SELECTION (CON'T)					
Setting	SW1/6	SW1/7	SW1/8	SW2/1	SW2/2
0000h	On	On	On	On	On
0040h	On	On	On	On	On
0080h	On	On	On	On	Off
00C0h	On	On	On	On	Off
0100h	On	On	On	Off	On
i 0180h	On	On	Off	Off	On
FEC0h	Off	Off	Off	On	Off
FF00h	Off	Off	Off	Off	On
FF40h	Off	Off	Off	Off	On
FF80h	Off	Off	Off	Off	Off
FFC0h	Off	Off	Off	Off	Off

Note: A total of 2048 base address settings are available. The switches are a binary representation of the decimal memory addresses. SW1/1 is the Most Significant Bit and switch SW2/2 is the Least Significant Bit. The switches have the following decimal values: SW1/1=32768, SW1/2=16384, SW1/3=8192, SW1/4=4096, SW1/5=2048, SW1/6=1024, SW1/7=512, SW1/8=256, SW2/1=128, SW2/2=64. Turn off the switches and add the values of the switches that are off to obtain the correct memory address. (Off=1, On=0)

SERIAL PORT INTERRUPT SELECTION						
Setting	JP1/A	JP1/B	JP1/C	JP1/D	JP1/E	JP1/F
IRQ2/9	Open	Open	Open	Open	Open	Open
IRQ3	Open	Open	Open	Open	Open	Open
IRQ4	Open	Open	Open	Open	Open	Open
IRQ5	Open	Open	Open	Open	Open	Open
IRQ6	Open	Open	Open	Open	Open	Open
IRQ7	Open	Open	Open	Open	Open	Open
i IRQ10	Open	Open	Open	Open	Open	Closed
IRQ11	Open	Open	Open	Open	Closed	Open
IRQ12	Open	Open	Open	Closed	Open	Open
IRQ14	Open	Open	Closed	Open	Open	Open
IRQ15	Open	Closed	Open	Open	Open	Open
External	Closed	Open	Open	Open	Open	Open

Continued on next page. . .

. . . continued from previous page

SERIAL PORT INTERRUPT SELECTION (CON'T)						
Setting	JP1/G	JP1/H	JP1/I	JP1/J	JP1/K	JP1/L
IRQ2/9	Open	Open	Open	Open	Open	Closed
IRQ3	Open	Open	Open	Open	Closed	Open
IRQ4	Open	Open	Open	Closed	Open	Open
IRQ5	Open	Open	Closed	Open	Open	Open
IRQ6	Open	Closed	Open	Open	Open	Open
IRQ7	Closed	Open	Open	Open	Open	Open
IRQ10	Open	Open	Open	Open	Open	Open
IRQ11	Open	Open	Open	Open	Open	Open
IRQ12	Open	Open	Open	Open	Open	Open
IRQ14	Open	Open	Open	Open	Open	Open
IRQ15	Open	Open	Open	Open	Open	Open
External	Open	Open	Open	Open	Open	Open

SERIAL PORT CLOCK SPEED				
Setting	Multiplier	JP3/A	JP3/B	JP3/C
1.8342MHz	1	Closed	Open	Open
3.6864MHz	2	Open	Closed	Open
7.3728MHz	4	Open	Open	Closed