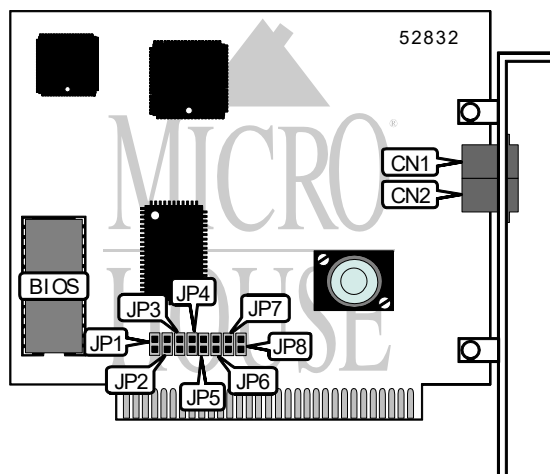


# ASKEY COMPUTER CORPORATION

## MDM-DF2828/SA

<b>Card Type</b>	Modem (synchronous/asynchronous)
<b>Chipset</b>	AT&T
<b>Maximum Data Rate</b>	28.8Kbps
<b>Maximum Fax Rate</b>	14.4Kbps
<b>Data Bus</b>	8-bit ISA
<b>Fax Class</b>	Class I & II
<b>Data Modulation</b>	Bell 103A/212A ITU-T V.21, V.22, V.22bis, V.23, V.32, V.32bis, V.34 AT&T V.32terbo Rockwell V.FC
<b>Fax Modulation</b>	ITU-T V.17, V.21CH2, V.27ter, V.29
<b>Error Correction/Compression</b>	MNP5, V.42, V.42bis



CONNECTIONS			
Function	Label	Function	Label
Line in	CN1	Line out	CN2

INTERRUPT SELECTION				
Setting	JP3	JP5	JP7	JP8
IRQ3	Open	Closed	Open	Open
IRQ4	Closed	Open	Open	Open
IRQ5	Open	Open	Closed	Open
IRQ7	Open	Open	Open	Closed

SERIAL PORT ADDRESS SELECTION				
Setting	JP1	JP2	JP4	JP6
3F8h (COM1:)	Open	Closed	Closed	Open
2F8h (COM2:)	Open	Closed	Open	Closed
3E8h (COM3:)	Closed	Open	Closed	Open
2E8h (COM4:)	Closed	Open	Open	Closed

SUPPORTED STANDARD COMMANDS
The command set is unidentified.