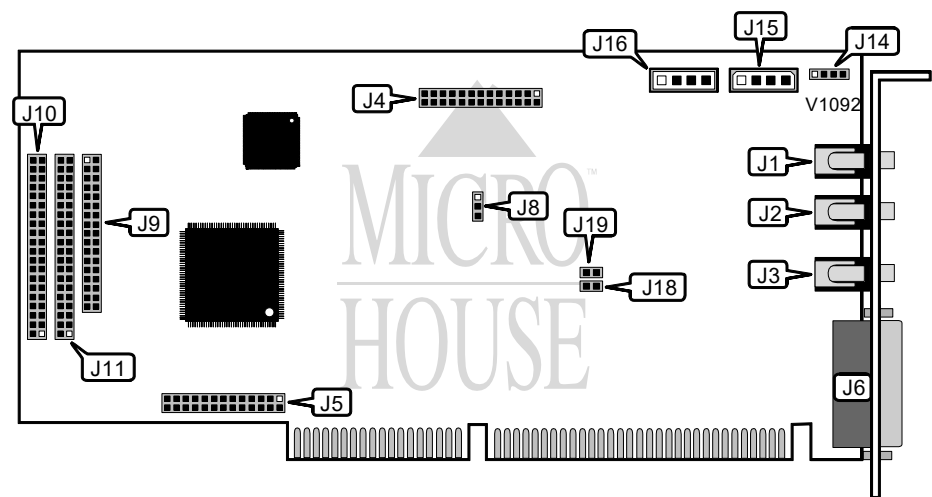


MEDIA VISION TECHNOLOGY, INC.
DELUXE SOUND CARD

Card Type	Sound card
Chipset Controller	Media Vision
I/O Options	CD-ROM audio in (3), CD-ROM interface (3), game/MIDI port, line in, line out, microphone, wavetable connector (2)
Maximum DRAM	N/A



CONNECTIONS			
Purpose	Location	Purpose	Location
Line in	J1	Sony CD-ROM interface	J9
Mic in	J2	Mitsumi CD-ROM interface	J10
Line out	J3	Panasonic CD-ROM interface	J11
Wavetable connector	J4	Sony CD - audio in	J14
Wavetable connector	J5	Panasonic CD - audio in	J15
Game/MIDI port	J6	Mitsumi CD - audio in	J16

DMA SHARING CONFIGURATION	
Setting	J8
No DMA sharing	Pins 2 & 3 closed
DMA sharing	Pins 1 & 2 closed

Continued next page...

MEDIA VISION TECHNOLOGY, INC.
DELUXE SOUND CARD

... continued from previous page.

MPU 401 CONFIGURATION	
Setting	J18
i Enabled	Open
Disabled	Closed

GAME PORT CONFIGURATION	
Setting	J19
i Enabled	Open
Disabled	Closed