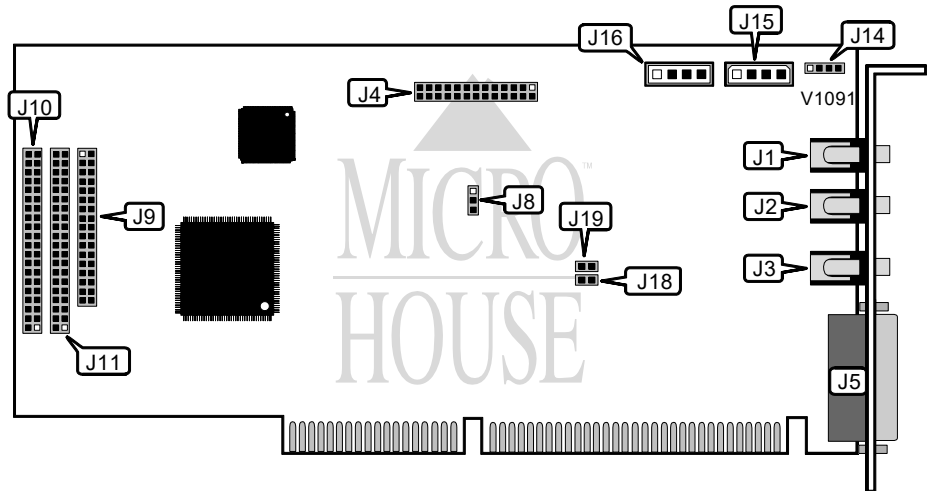


MEDIA VISION TECHNOLOGY, INC.  
GETTING STARTED(SANYO 94A/123)

**Card Type**  
**Chipset Controller**  
**I/O Options**

Sound card  
Media Vision  
CD-ROM audio in (3), CD-ROM interface (3), game/MIDI port, line in, line out, microphone, wavetable connector  
N/A

**Maximum DRAM**



CONNECTIONS			
Purpose	Location	Purpose	Location
Line in	J1	Mitsumi CD-ROM interface	J10
Mic in	J2	Panasonic CD-ROM interface	J11
Line out	J3	Sony CD - audio in	J14
Wavetable connector	J4	Panasonic CD - audio in	J15
Game/MIDI port	J5	Mitsumi CD - audio in	J16
Sony CD-ROM interface	J9		

DMA SHARING CONFIGURATION	
Setting	J8
No DMA sharing	Pins 2 & 3 closed
DMA sharing	Pins 1 & 2 closed

Continued next page...

MEDIA VISION TECHNOLOGY, INC.  
GETTING STARTED(SANYO 94A/123)

... continued from previous page.

MPU 401 CONFIGURATION	
Setting	J18
i Enabled	Open
Disabled	Closed

GAME PORT CONFIGURATION	
Setting	J19
i Enabled	Open
Disabled	Closed