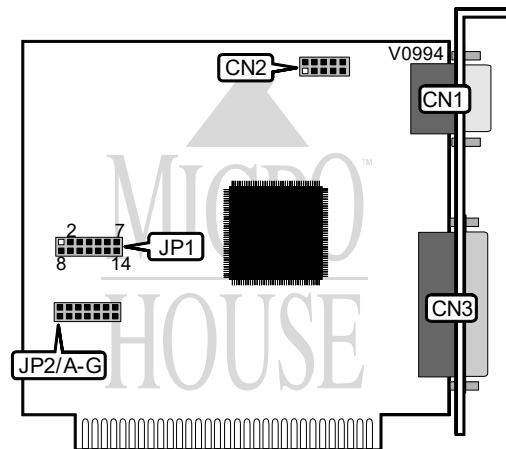


SIIG, INC. I/O PROFESSIONAL

Card Type
Chipset Controller
I/O Options
Maximum DRAM

Multi I/O card
Unidentified
Bi-directional parallel port, serial ports(2)
N/A



CONNECTIONS			
Purpose	Location	Purpose	Location
9-pin serial port connector	CN1	25-pin bi-directional parallel port connector	CN3
10-pin serial port interface	CN2		

SERIAL PORT 1 CONFIGURATION				
Address	IRQ	JP2/A	JP2/B	JP1
3F8h-3FFh(COM1)	4	Open	Open	Pins 1 & 2 closed
3E8h-3EFh(COM3)	5	Closed	Open	Pins 2 & 3 closed
2E8h-2EFh(COM4)	2/9	Open	Closed	Pins 9 & 10 closed
Disabled	N/A	Closed	Closed	N/A

SERIAL PORT 2 CONFIGURATION				
Address	IRQ	JP2/C	JP2/D	JP1
2F8h-2FFh(COM2)	3	Open	Open	Pins 4 & 5 closed
2E8h-2EFh(COM4)	2/9	Closed	Open	Pins 10 & 11 closed
3E8h-3EFh(COM3)	5	Open	Closed	Pins 3 & 4 closed
Disabled	N/A	Closed	Closed	N/A

Continued next page...

SIIG, INC.
I/O PROFESSIONAL

... continued from previous page.

PARALLEL PORT CONFIGURATION				
Address	IRQ	JP2/E	JP2/F	JP1
í 378h-37Fh	7	Closed	Open	Pins 6 & 7 closed
278h-27Fh	5	Open	Closed	Pins 13 & 14 closed
Disabled	N/A	Closed	Closed	N/A

BI-DIRECTIONAL PARALLEL PORT COMPATIBILITY CONFIGURATION	
Mode	JP2/G
í Bi-directional	Open
Uni-directional	Closed