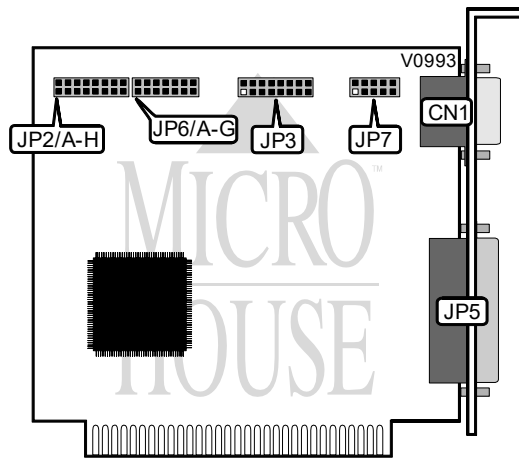


SIIG, INC.

I/O EXTENSION A.3 (VER. 2.0)

Card Type	Multi I/O card
Chipset Controller	Unidentified
I/O Options	Game port, parallel port, serial ports(2)
Maximum DRAM	N/A



CONNECTIONS			
Purpose	Location	Purpose	Location
9-pin serial connector	CN1	25-pin parallel port connector	JP5
16-pin game port interface	JP3	10-pin serial port interface	JP7

SERIAL PORT 1 BASE I/O ADDRESS SELECTION			
Address	JP6/A	JP6/B	
3F8h-3FFh(COM1)	Closed	Open	
3E8h-3EFh(COM3)	Open	Closed	
2E8h-2EFh(COM4)	Closed	Closed	
Disabled	Open	Open	

SERIAL PORT 1 INTERRUPT SELECTION			
IRQ	JP2/A	JP2/B	JP2/C
4	Closed	Open	Open
2/9	Open	Open	Closed
5	Open	Closed	Open

Continued next page...

SIIG, INC.
I/O EXTENSION A.3 (VER. 2.0)

... continued from previous page.

SERIAL PORT 2 BASE I/O ADDRESS SELECTION		
Address	JP6/C	JP6/D
2F8h-2FFh(COM2)	Closed	Open
3E8h-3EFh(COM3)	Closed	Closed
2E8h-2EFh(COM4)	Open	Closed
Disabled	Open	Open

SERIAL PORT 2 INTERRUPT SELECTION			
IRQ	JP2/D	JP2/E	JP2/F
3	Closed	Open	Open
2/9	Open	Closed	Open
5	Open	Open	Closed

PARALLEL PORT BASE I/O ADDRESS SELECTION		
Address	JP6/E	JP6/F
378h	Closed	Open
278h	Open	Closed
Disabled	Open	Open

PARALLEL PORT INTERRUPT SELECTION		
IRQ	JP2/G	JP2/H
7	Open	Closed
5	Closed	Open

GAME PORT CONFIGURATION	
Setting	JP6/G
Enabled	Closed
Disabled	Open