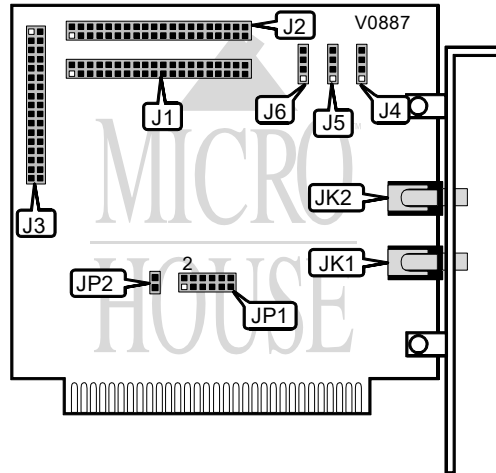


**Chapter 5: Jumper Settings**  
**TOPTEK MULTIMEDIA, INC.**  
**GOLDEN SOUND CD-ROM 3-IN-1 (VER. 3.01)**

<b>Card Type</b>	Sound card/CD-ROM
<b>Chipset Controller</b>	TMC
<b>I/O Options</b>	Sound in, sound out, CD-ROM interfaces (3), CD-ROM audio (3)
<b>Maximum DRAM</b>	N/A



CONNECTIONS			
Purpose	Location	Purpose	Location
Panasonic CDROM interface	J1	CD audio in	J5
Mitsumi CDROM interface	J2	CD audio in	J6
Sony CDROM interface	J3	Line out	JK1
CD audio in	J4	Line in	JK2

MITSUMI CD-ROM INTERFACE INTERRUPT SELECTION			
IRQ	JP1 (pins 7 & 8)	JP1 (pins 9 & 10)	JP1 (pins 11 & 12)
3	Closed	Open	Open
4	Open	Closed	Open
5	Open	Open	Closed

CD-ROM INTERFACE ADDRESS SELECTION			
Sony address	Mitsumi address	Panasonic address	JP2
320h	300h	310h	Closed
360h	340h	350h	Open

Continued next page...

**THE NETWORK INTERFACE CARD TECHNICAL GUIDE**  
**TOPTEK MULTIMEDIA, INC.**  
**GOLDEN SOUND CD-ROM 3-IN-1 (VER. 3.01)**

... continued from previous page.

DMA SELECTION	
DMA	JP1
1	Pins 1 & 3, 2 & 4 closed
3	Pins 3 & 5, 4 & 6 closed

CD-ROM AUDIO INTERFACE PIN-OUT TABLE	
Connector	Diagram
J4	<div> <div></div> Ground  <div></div> Right  <div></div> Ground  <div></div> Left </div>
J5	<div> <div></div> Left  <div></div> Ground  <div></div> Ground  <div></div> Right </div>
J6	<div> <div></div> Right  <div></div> Ground  <div></div> Left  <div></div> Ground </div>