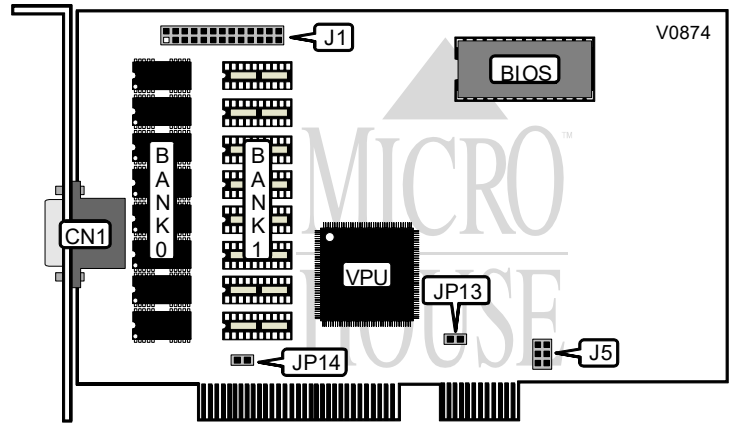


PROLINK COMPUTER, INC.
MVGA-TW32P+

Category	Video/hard drive controller
Video Types Supported	XVGA
Video Processor	Tseng Laboratories, Inc.
Highest Resolution Supported	1280 x 1024
Data Bus Type	PCI
Memory Type	DRAM
Maximum Onboard Memory	2MB



CONNECTIONS			
Purpose	Location	Purpose	Location
15-pin analog video port	CN1	40-pin IDE (AT) interface connector A	J3
VESA feature connector	J1	40-pin IDE (AT) interface connector B	J4
IDE daughter board connector	J5	2-pin connector - drive 0,1 active LED	JP1
		2-pin connector - drive 2,3 active LED	JP16

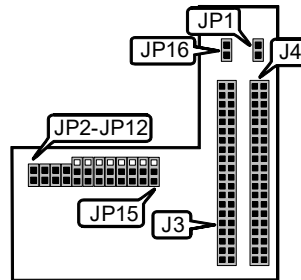
IRQ9	
Setting	JP14
Disabled	Open
Enabled	Closed

Continued on next page. . .

PROLINK COMPUTER, INC.
MVGA-TW32P+

...continued from previous page

DRAM CONFIGURATION		
Size	Bank 1	Bank 2
1MB	(8) 256K x 4	None
2MB	(8) 256K x 4	(8) 256K x 4



OPTIONAL IDE CONTROLLER DAUGHTER CARD

IDE INTERRUPT SELECT				
IRQ	JP2	JP3	JP4	JP5
1 INTA	Open	Open	Open	Closed
2 INTB	Open	Open	Closed	Open
3 INTC	Open	Closed	Open	Open
4 INTD	Closed	Open	Open	Open

IDE PORTS	
Setting	JP10
1 Disabled	Pins 2 & 3 closed
Enabled	Pins 1 & 2 closed

MISCELLANEOUS TECHNICAL NOTES
The functions and settings of jumpers JP6-JP9, JP11-JP13, JP15 and JP16 are unidentified.