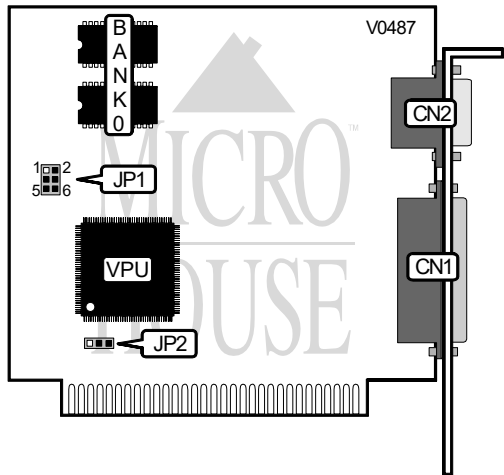


DIAMOND FLOWER, INC.
MG-160N

Card Type
Chipset/Controller
I/O Options
Maximum DRAM

Parallel printer controller, graphics card
Unidentified
Parallel, video ports
64KB



CONNECTIONS			
Purpose :	Location	Purpose :	Location
Parallel port	CN1	15-pin analog video port	CN2

PARALLEL PORT (CN1) CONFIGURATION		
LPT/Address/IRQ	JP1	JP2
LPT1/3BCh/IRQ7	pins 2 & 4, 3 & 5 closed	pins 2 & 3 closed
LPT1/38Ch/IRQ5	pins 2 & 4, 3 & 5 closed	pins 1 & 2 closed
LPT2/378h/IRQ5	pins 1 & 3, 4 & 6 closed	pins 1 & 2 closed
LPT2/378h/IRQ7	pins 1 & 3, 4 & 6 closed	pins 2 & 3 closed
LPT3/278h/IRQ5	pins 1 & 3, 2 & 4 closed	pins 1 & 2 closed
LPT3/278h/IRQ7	pins 1 & 3, 2 & 4 closed	pins 2 & 3 closed
Disabled	pins 3 & 5, 4 & 6 closed	N/A