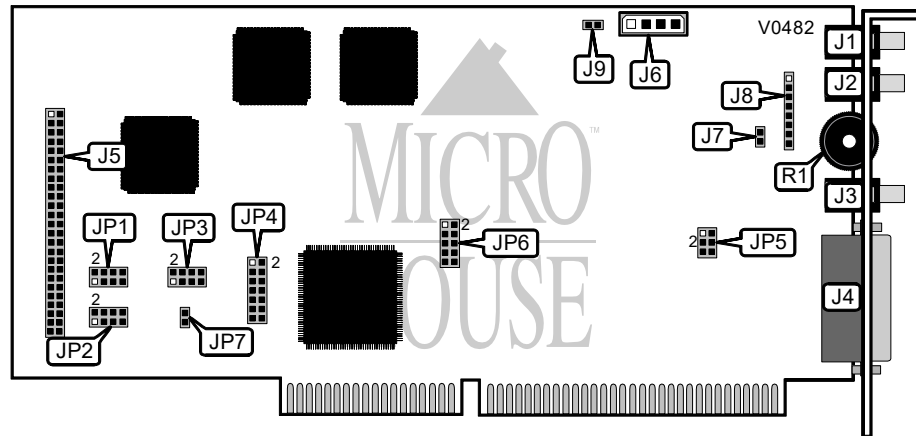


COMPAQ COMPUTER CORPORATION SOUND BOARD

Card Type	Sound card
Chipset Controller	Unidentified
I/O Options	Line in, Microphone in (2), volume control, stereo speaker out (2), mono speaker out, game/MIDI port, SCSI CD-ROM interface, CD-ROM audio out, PC speaker in
Maximum Dram	N/A



CONNECTIONS			
Purpose :	Location	Purpose :	Location
Line in	J1	Molex-D 4 audio out	J6
Microphone in	J2	Right (mono) speaker out	J7
Stereo speaker out	J3	Audio I/O (see table below)	J8
Game/MIDI port	J4	PC Speaker in	J9
SCSI CD-ROM interface	J5	Volume control	R1

CONNECTOR J8			
Purpose :	Pin	Purpose :	Pin
Microphone in ground	1	Right speaker out	5
Microphone in ground	2	Left speaker out	6
Microphone in	3	Right speaker return	7
Speaker out ground	4	Left speaker return	8

INTERNAL AUDIO AMPLIFIER CONFIGURATION		
Left ar p	Right ar p	JP5
Enabled	Enabled	Pins 2 & 3, 5 & 6 closed
Disabled	Disabled	Pins 1 & 2, 4 & 5 closed

Continued on next page. . .

COMPAQ COMPUTER CORPORATION SOUND BOARD

...continued from previous page

BASE I/O ADDRESS FOR MIDI PORT SELECTION	
Address	JP4
í 330h	Pins 1 & 2 closed
300h	Pins 1 & 2 open

BASE I/O ADDRESS FOR SOUND CARD SELECTION	
Address	JP6
í 220h	Pins 7 & 8, 9 & 10 closed
240h	Pins 9 & 10 closed
260h	Pins 7 & 8 closed
280h	Pins 7 & 8, 9 & 10 open

BASE I/O ADDRESS FOR SCSI INTERFACE SELECTION	
Address	JP7
í 340h	Open
140h	Closed

INTERRUPT FOR SCSI INTERFACE SELECTION	
IRQ	JP3
9	Pins 1 & 2 closed
10	Pins 3 & 4 closed
í 11	Pins 5 & 6 closed
12	Pins 7 & 8 closed

INTERRUPT FOR SOUND CARD SELECTION	
IRQ	JP4
2	Pins 11 & 12, 13 & 14 closed
í 5	Pins 13 & 14 closed
7	Pins 11 & 12 closed
10	Pins 11 & 12, 13 & 14 open

GAME PORT CONFIGURATION	
Port	JP6
í Enabled	Pins 5 & 6 closed
Disabled	Pins 5 & 6 open

8-BIT DMA CHANNEL FOR SOUND CARD SELECTION	
Channel	JP4
0	Pins 3 & 4, 5 & 6 closed
í 1	Pins 5 & 6 closed
3	Pins 3 & 4 closed

Continued on next page...

COMPAQ COMPUTER CORPORATION SOUND CARD

...continued from previous page

16-BIT DMA CHANNEL FOR SOUND CARD SELECTION	
Channel	JP4
5	Pins 7 & 8, 9 & 10 closed
6	Pins 9 & 10 closed
7	Pins 7 & 8 closed

DMA CHANNEL FOR SCSI INTERFACE SELECTION		
Channel	JP1	JP2
0	Pins 1 & 2 closed	Pins 1 & 2 closed
5	Pins 3 & 4 closed	Pins 3 & 4 closed
6	Pins 5 & 6 closed	Pins 5 & 6 closed
7	Pins 7 & 8 closed	Pins 7 & 8 closed