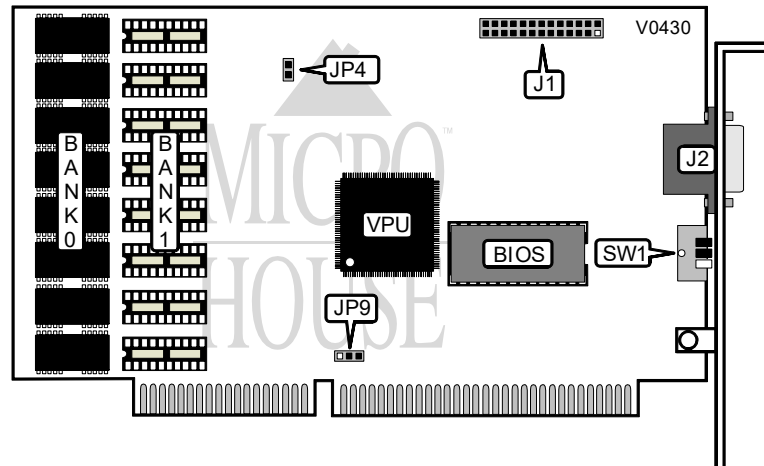


PROLINK COMPUTER, INC.
MVGA-S3C801

Category	Video
Video Type	XVGA
Video Processor	S3, Inc.
Highest Resolution Supported	1280 x 1024
Data Bus Type	16-bit ISA
Memory Type	DRAM
Maximum Onboard Memory	2MB



CONNECTIONS			
Purpos	Location	Purpos	Location
VESA Feature connector	J1	15-pin analog video port	J2

MEMORY SELECTION	
Size	JP4
1MB	Open
2MB	Closed

INTERRUPT REQUEST	
Setting	JP9
IRQ9 disabled/IRQ3 disabled	Open
IRQ3 enabled/IRQ9 disabled	pins 1 & 2 closed
IRQ9 enabled/IRQ3 disabled	pins 2 & 3 closed

Continued on next page . . .

PROLINK COMPUTER, INC.
MVGA-S3C801

. . . continued from previous page

RESOLUTION SELECTION					
RESOLUTION	REFRESH	H. FREQUENCY	SW1/1	SW1/2	SW1/3
640x480 non-interlaced	60Hz	31.5KHz	On	On	On
640x480 non-interlaced	72Hz	38KHz	Off	On	On
800x600 non-interlaced	60Hz	38KHz	On	Off	On
800x600 non-interlaced	72Hz	48.5KHz	Off	Off	On
800x600 non-interlaced	56Hz	35.5KHz	On	On	Off
1024x768 interlaced	43.5Hz	35.5KHz	Off	On	Off
1024x768 non-interlaced	60Hz	48.5KHz	On	Off	Off
1024x768 non-interlaced	70Hz	57KHz	Off	Off	Off
1280x1024 interlaced	43Hz	46KHz	Off	On	Off

VIDEO MEMORY CONFIGURATION		
Size	Bank 1	Bank 2
1MB	(8) 256K x 4	NONE
2MB	(8) 256K x 4	(8) 256K x 4