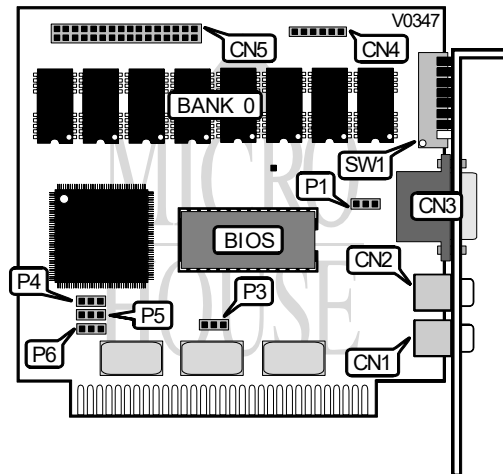


UNIDENTIFIED DEGA (SURFACE MOUNT)

Category	Video card
Video Type	CGA/EGA/Monochrome
Video Processor	Unidentified
Highest Resolution Supported	800 x 600
Data Bus Type	8-bit ISA
Memory Type	DRAM
Maximum Onboard Memory	256KB



CONNECTIONS			
Purpose	Location	Purpose	Location
RCA jack 1	CN1	Light pen connector	CN4
RCA jack 2	CN2	Feature connector	CN5
9-pin analog video port	CN3		

MONITOR TYPE SELECT			
Type	SW1/5	SW1/6	P1
Hercules/Monochrome	Off	On	Pins 1 & 2 closed
EGA	On	On	Pins 2 & 3 closed
CGA	On	Off	Pins 1 & 2 closed

I/O PORT ADDRESS CONFIGURATION	
Port	P3
3xxh	Pins 2 & 3 closed
2xxh	Pins 1 & 2 closed

Continued on next page . . .

UNIDENTIFIED DEGA (SURFACE MOUNT)

... continued from previous page

AUTOMODE SELECT		
Autom de	P4	P6
í Enabled	Pins 1 & 2 closed	Pins 2 & 3 closed
Disabled	Pins 2 & 3 closed	Pins 1 & 2 closed

EXPANSION SLOT CONFIGURATION	
Slot 8	P5
í Not used by DEGA	Pins 1 & 2 closed
Used by DEGA	Pins 2 & 3 closed

DISPLAY CONFIGURATION				
Monitor type	SW1/1	SW1/2	SW1/3	SW1/4
RGB 40 x 35	On	Off	Off	On
RGB 80 x 25	Off	Off	Off	On
Enhanced Color (Hi-resolution)	Off	On	On	Off
Enhanced Color (Low resolution)	On	On	On	Off
Monochrome	Off	Off	On	Off
Note: These settings apply in single monitor systems.				

DISPLAY CONFIGURATION					
Primary Monitor	Secondary Monitor	SW1/1	SW1/2	SW1/3	SW1/4
Enhanced Color (Hi-resolution)	Monochrome	Off	On	On	Off
Enhanced Color (Low-resolution)	Monochrome	On	On	On	Off
RGB 80 x 25	Monochrome	Off	Off	Off	On
RGB 40 x 25	Monochrome	On	Off	Off	On
Monochrome	RGB 80 x 25	Off	Off	On	Off
Monochrome	RGB 40 x 25	On	Off	On	Off
Note: These settings apply when the primary monitor is attached to the DEGA card.					

DISPLAY CONFIGURATION					
Primary Monitor	Secondary Monitor	SW1/1	SW1/2	SW1/3	SW1/4
RGB 80 x 25	Monochrome	Off	On	Off	On
RGB 40 x 25	Monochrome	On	On	Off	On
Monochrome	Enhanced Color (Hi-resolution)	Off	Off	On	On
Monochrome	Enhanced color (Low-resolution)	On	Off	On	On
Monochrome	RGB 80 x 25	Off	On	On	On
Monochrome	RGB 40 x 25	On	On	On	On
Note: These settings apply when the secondary monitor is attached to the DEGA card.					

FACTORY CONFIGURED SETTINGS	
Switch	Setting
SW1/7	Off
SW1/8	Off
Note: These switches are reserved for future use.	