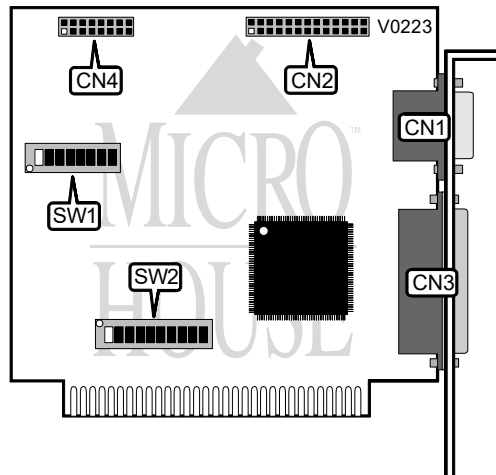


KOUWELL ELECTRONIC CORPORATION

KW-524H

Card Type
Chipset/Controller
I/O Options
Maximum DRAM

Multi I/O card
 SIS
 Game port, parallel port, serial ports (2)
 N/A



CONNECTIONS			
Purpose	Location	Purpose	Location
Serial port 1	CN1	Parallel port	CN3
Serial port 2	CN2	Game port	CN4

SERIAL PORT CONFIGURATION				
Port 1 (CN1)	W1/switch 1	W1/switch 2	W1/switch 3	W1/switch 4
COM1	On	Off	Off	Off
COM2	Off	Off	On	Off
COM3	Off	On	Off	Off
COM4	Off	Off	Off	On
Disabled	Off	Off	Off	Off

SERIAL PORT CONFIGURATION				
Port 2 (CN2)	W1/switch 5	W1/switch 6	W1/switch 7	W1/switch 8
COM1	On	Off	Off	Off
COM2	Off	Off	On	Off
COM3	Off	On	Off	Off
COM4	Off	Off	Off	On
Disabled	Off	Off	Off	Off

Continued on next page . . .

KOUWELL ELECTRONIC CORPORATION

KW-524H

... continued from previous page

SERIAL PORT INTERRUPT SELECT				
Port 1 (N1)	W2/switch 3	W2/switch 4	W2/switch 5	W2/switch 6
IRQ9	On	Off	Off	Off
IRQ3	Off	On	Off	Off
IRQ4	Off	Off	On	Off
IRQ5	Off	Off	Off	On

SERIAL PORT INTERRUPT SELECT				
Port 2 (N2)	W2/switch 7	W2/switch 8	W2/switch 9	W2/switch 10
IRQ3	Off	On	Off	Off
IRQ4	Off	Off	On	Off
IRQ5	Off	Off	Off	On
IRQ9	On	Off	Off	Off

PARALLEL PORT CONFIGURATION		
LP1	SW2/switch 1	SW2/switch 2
1	On	Off
2	Off	On
Disabled	Off	Off

MISCELLANEOUS TECHNICAL NOTE	
On some versions of the KW-524H the switches may be substituted for jumpers, in which case Off is open and On is closed.	