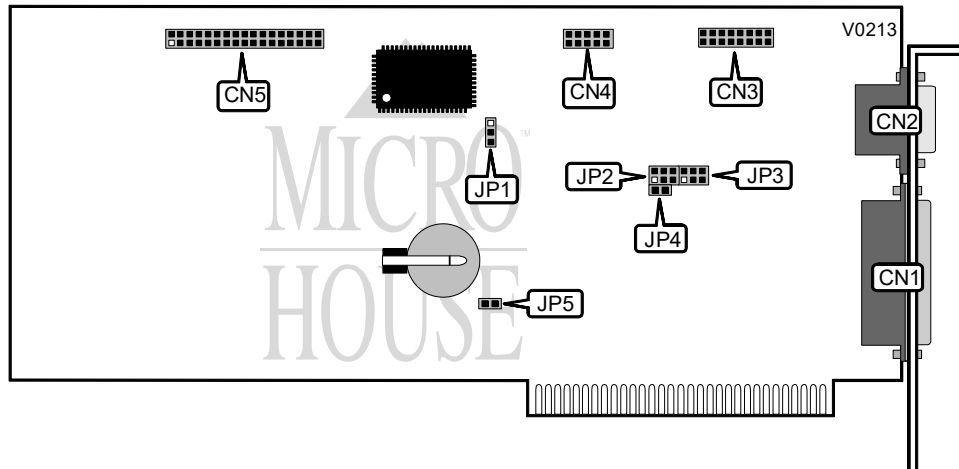


DTK COMPUTER, INC. PII-147 HEXA I/O PLUS

Card Type	Multi I/O card
Chipset/Controller	Unidentified
I/O Options	Floppy drive interface, game port, parallel port, serial ports (2)
Maximum DRAM	N/A



CONNECTIONS			
Purpose	Location	Purpose	Location
Parallel port	CN1	Game port	CN4
Serial port 1	CN2	Floppy drive interface	CN5
Serial port 2	CN3		

SERIAL PORT CONFIGURATION				
Hexa Port 1	Hexa Port 2	Motherboard Port 1	JP2	JP3
COM1	COM2	None	Pins 2 & 3, 4 & 5	Pins 5 & 6
COM2	COM1	None	Pins 1 & 2, 5 & 6	Pins 4 & 5
COM2	N/A	COM1	Pins 5 & 6	Pins 4 & 5
COM1	N/A	COM2	Pins 2 & 3	Pins 5 & 6

Note: Pins designated should be in the closed position.

SERIAL PORT INTERRUPT SELECTION		
Port 1 (CN2)	Port 2 (CN3)	JP3
IRQ4	IRQ3	Pins 1 & 2, 5 & 6 closed
IRQ3	IRQ4	Pins 2 & 3, 4 & 5 closed

PARALLEL PORT CONFIGURATION	
LPT	JP5
1	Open
2	Closed

Continued on next page . . .

DTK COMPUTER, INC.
PII-147 HEXA I/O PLUS

... continued from previous page

CLOCK SELECTION	
Clock	JP1
1	Pins 1 & 2 closed
2	Pins 2 & 3 closed

GAME PORT CONFIGURATION	
Port	JP4
Enabled	Closed
Disabled	Open