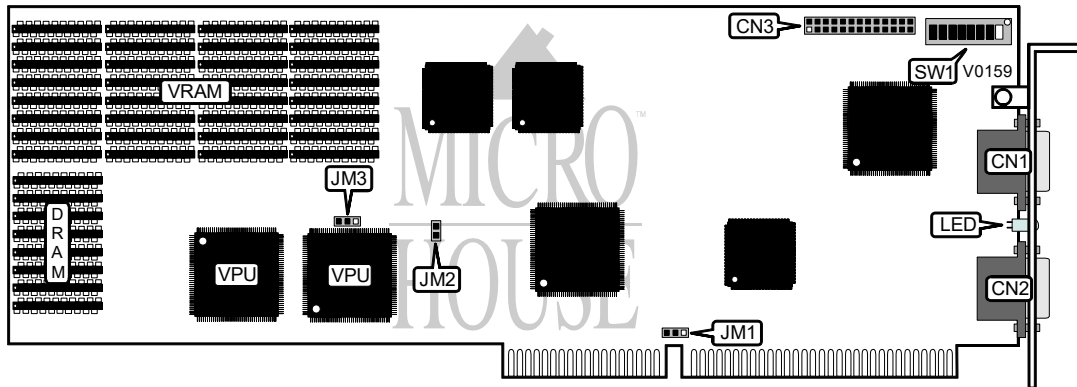


NUMBER NINE VISUAL TECHNOLOGY  
#9GXITC

<b>Category</b>	Video
<b>Video Types Supported</b>	XVGA
<b>Video Processor</b>	TMS34020
<b>Highest Resolution Supported</b>	1280 X 1024
<b>Data Bus Type</b>	16-bit ISA
<b>Memory Type</b>	DRAM/VRAM
<b>Maximum Onboard Memory</b>	4096KB DRAM/4096KB VRAM



CONNECTIONS			
Purpose	Location	Purpose	Location
15-pin analog video port	CN1	External VGA loop-through connector	CN3
15-pin analog video port	CN2	Self-test LED	LED

I/O ADDRESS CONFIGURATION			
Address	S V1/1	S V1/2	S V1/3
12A0h - 2AFh	On	Off	On
280h - 28Fh	On	On	On
290h - 29Fh	On	On	Off
2B0h - 2BFh	On	Off	Off
2C0h - 2CFh	Off	On	Off
2D0h - 2DFh	Off	On	Off
2E0h - 2EFh	Off	On	On
Reserved	Off	Off	Off

*Continued on next page . . .*

# NUMBER NINE VISUAL TECHNOLOGY

## #9GXITC

... continued from previous page

MONITOR TYPE CONFIGURATION		
Type		SW1/5
Single monitor: #9GXi with on-board VGA		On
Single monitor #9gxi with external VGA		Off
Dual monitor: #9GXi with on-board VGA		On
Dual monitor #9gxi with external VGA		Off

VGA BIOS TRANSFER CONFIGURATION		
Setting		SW1/6
if Access BIOS data in word mode (16-bit)		On
Access BIOS data in byte mode (8-bit)		Off

MONOCHROME EMULATION CONFIGURATION		
Setting		SW1/7
if Disabled		Off
Enabled		On

MEM 16 DECODE CONFIGURATION		
Setting		JM1
if Use low and high-order address signals		Pins 2 & 3 closed
Use only high-order address signals		Pins 1 & 2 closed

I/O 16 SIGNAL CONFIGURATION		
Signal		JM2
if Unqualified		Open
Qualified		Closed

FACTORY CONFIGURED - DO NOT ALTER		
Switch		Position
SW1/switch 4		On
SW1/switch 8		On

DRAM /VRAM CONFIGURATION			
Size	DRAM		JM3
1024KB	(8) 256K x 4 ZIP		Pins 1 & 2 closed
4096KB	(8) 1M x 4 ZIP		Pins 2 & 3 closed