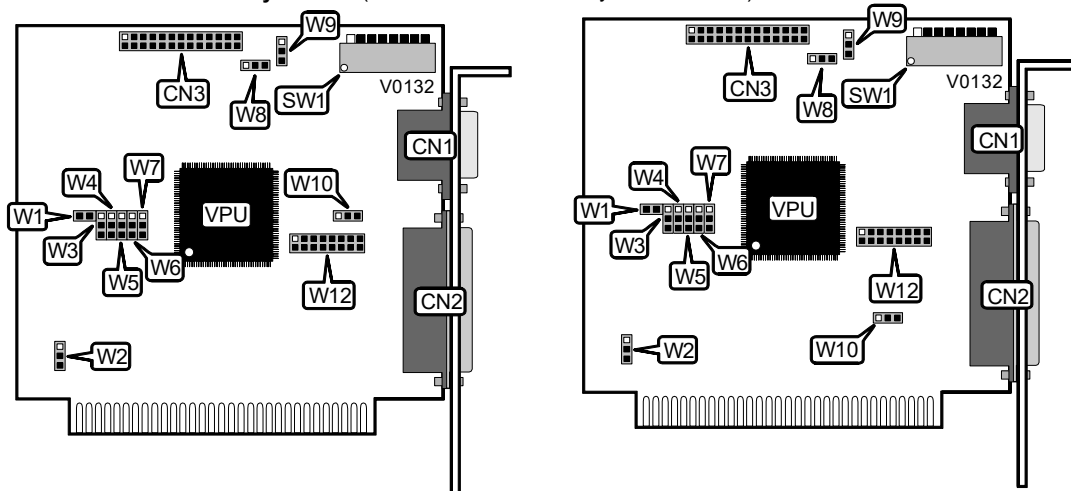


EVEREX SYSTEMS, INC.
MICROENHANCER DELUXE EV-659 (VER. 1.1/2.0)

Category	Video
Video Types Supported	CGA/EGA/Monochrome
Video Processor	Unidentified
Highest Resolution Supported	640 x 350
Data Bus Type	8-bit ISA
Memory Type	DRAM
Maximum Onboard Memory	256KB (Exact location of memory is unidentified)



CONNECTIONS			
Purpose	Location	Purpose	Location
15-pin analog video port	CN1	VGA feature connector	CN3
Parallel port	CN2	RCA Jack (optional)	W9

COLUMN (132) DISPLAY CONFIGURATION	
Setting	W1
Enabled	Closed
Disabled	Open

I/O PORT ADDRESS CONFIGURATION	
Address	W5
3xx	Pins 1 & 2 closed
2xx	Pins 2 & 3 closed

Continued on next page . . .

EVEREX SYSTEMS, INC.
MICROENHANCER DELUXE EV-659 (VER. 1.1/2.0)

... continued from previous page

VIDEO INTERRUPT SELECTION		
IRC	W6	W12
Non-Maskable Interrupt	Pins 1 & 2 closed	Pins 1 & 2 closed
2	Pins 2 & 3 closed	Pins 2 & 3 closed
3	Pins 2 & 3 closed	Pins 4 & 5 closed
3	Pins 2 & 3 closed	Pins 5 & 6 closed
5	Pins 2 & 3 closed	Pins 7 & 8 closed
6	Pins 2 & 3 closed	Pins 9 & 10 closed
Disabled	Pins 2 & 3 closed	Pins 11 & 12 closed

PARALLEL PORT INTERRUPT SELECTION	
IRQ	W10
i7	Pins 2 & 3 closed
5	Pins 1 & 2 closed

PARALLEL PORT CONFIGURATION			
LPT	Address	V3	V4
1	3BCh - 3BEh	Pins 2 & 3 closed	Pins 1 & 2 closed
2	378h - 37Fh	Pins 1 & 2 closed	Pins 1 & 2 closed
3	278h - 27Fh	Pins 1 & 2 closed	Pins 2 & 3 closed
Disabled	N/A	Pins 2 & 3 closed	Pins 2 & 3 closed

MONITOR TYPE SELECTION						
Type	SW1/1	SW1/2	SW1/3	SW1/4	SW1/7	SW1/8
Enhanced 80 x 25	Off	On	On	Off	On	On
Enhanced color 80 x 25	On	On	On	Off	On	On
Color 80 x 25	Off	Off	Off	On	On	Off
Color 40 x 24	On	Off	Off	On	On	Off
Monochrome	Off	Off	On	Off	Off	Off

VIDEO EMULATION CONFIGURATION	
Setting	SW1/5
Hercules and CGA emulation disabled	Off
Hercules and CGA emulation enabled	On

Continued on next page ...

EVEREX SYSTEMS, INC.
MICROENHANCER DELUXE EV-659 (VER. 1.1/2.0)

... continued from previous page

AUTOMATIC DISPLAY MODE CONFIGURTION	
Setting	SW1/6
Disabled	Off
Enabled	Off

FACTORY CONFIGURED - DO NOT ALTER	
Jumper	Position
W2	N/A
W7	N/A
W8	N/A
W11 (Location unidentified)	N/A