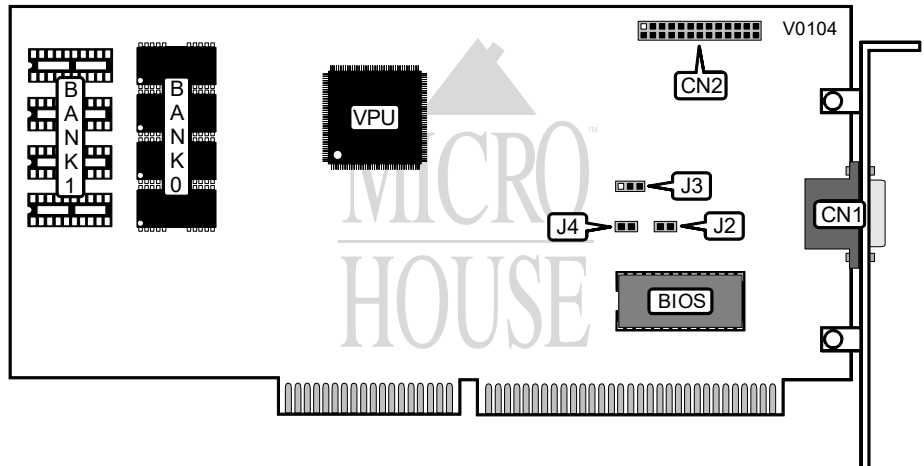


JATON CORPORATION  
JAX-8212

Category	Video
Video Types Supported	XVGA
Video Processor	8900C
Highest Resolution Supported	1024 x 768
Data Bus Type	16-bit ISA
Memory Type	DRAM
Maximum Onboard Memory	512KB



CONNECTIONS			
Purpose :	Location	Purpose :	Location
15-pin analog video port	CN1	VGA feature connector	CN2

SCAN RATE SELECTION	
Rate	J2
Default scan rate	Closed
48.7Khz	Open

BUS SIZE DETECT CONFIGURATION	
Setting	J4
Autodetect	Open
Standard interface	Closed

Continued on next page . . .

JATON CORPORATION  
JAX-8212

... continued from previous page

FACTORY CONFIGURED - DO NOT ALTER		
Jumper		Position
J3		Pins 1 & 2 closed

DRAM CONFIGURATION		
Size	Bank 1	Bank 2
256KB	(2) 41256	None
512KB	(2) 41256	(2) 41256