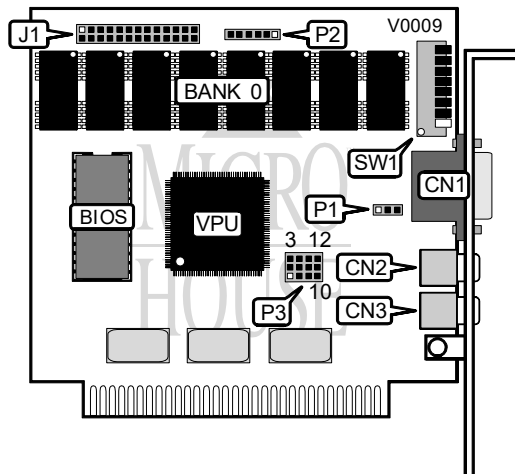


DEICO ELECTRONICS, INC.

DEGA-S800

Category	Video
Video Types Supported	EGA/Monochrome
Video Processor	DEICO 800
Highest Resolution Supported	800 x 600
Data Bus Type	8-bit ISA
Memory Type	DRAM
Maximum Onboard Memory	256KB



CONNECTIONS			
Purpose	Location	Purpose	Location
9-pin analog video port	CN1	VESA Feature connector	J1
Composite video connectors	CN2 & CN3	Light pen	P2

SYSTEM MODE SELECTION	
Mode	SW1/5 & 6
XT series or compatible	On
AT series or compatible	Off

SINGLE MONITOR CONFIGURATION					
Monitor	P1	SW1/1	SW1/2	SW1/3	SW1/4
RGB 40 x 25	Pins 1 & 2 closed	On	Off	Off	On
RGB 80 x 25	Pins 1 & 2 closed	Off	Off	Off	On
ECD hi-resolution	Pins 2 & 3 closed	Off	On	On	Off
ECD low-resolution	Pins 2 & 3 closed	Off	On	On	Off
Monochrome	Pins 1 & 2 closed	Off	Off	On	Off

Continued on next page . . .

DEICO ELECTRONICS, INC.
DEGA-S800

... continued from previous page

DUAL MONITOR CONFIGURATION						
Primary monitor	Secondary monitor	P1	SW1/1	SW1/2	SW1/3	SW1/4
ECD hi-resolution	Monochrome	Pins 1 & 2	Off	On	On	Off
ECD low-resolution	Monochrome	Pins 1 & 2	On	On	On	Off
RGB 80 x 25	Monochrome	Pins 2 & 3	Off	Off	Off	On
RGB 40 x 25	Monochrome	Pins 2 & 3	On	Off	Off	On
Monochrome	RGB 80 x 25	Pins 2 & 3	Off	Off	On	Off
Monochrome	RGB 40 x 25	Pins 2 & 3	On	Off	On	Off
RGB 80 x 25	Monochrome	Pins 1 & 2	Off	On	Off	On
RGB 40 x 25	Monochrome	Pins 1 & 2	On	On	Off	On
Monochrome	ECD hi-resolution	Pins 2 & 3	Off	Off	On	On
Monochrome	ECD low-resolution	Pins 2 & 3	On	Off	On	On
Monochrome	RGB 80 x 25	Pins 1 & 2	Off	On	On	On
Monochrome	RGB 40 x 25	Pins 1 & 2	On	On	On	On

Note: Pins designated are in the closed position.

AUTOMODE CONFIGURATION				
Setting	P3/Pins 4 & 5	P3/Pins 5 & 6	P3/Pins 10 & 11	P3/Pins 11 & 12
Automode enabled	Open	Closed	Closed	Open
Automode disabled	Closed	Open	Open	Closed

SLOT 8 CONFIGURATION		
Setting	P3/Pins 7 & 8	P3/Pins 8 & 9
Using slot 8 in an IBM PC	Closed	Open
Not using slot 8	Open	Closed

PORT ADDRESS SELECTION		
Address	P3/Pins 1 & 2	P3/Pins 2 & 3
Normal operation	Closed	Open
Port 2XX (alternate)	Open	Closed

FACTORY CONFIGURED - DO NOT ALTER	
Switch	Position
SW1/7	Off
SW1/8	Off