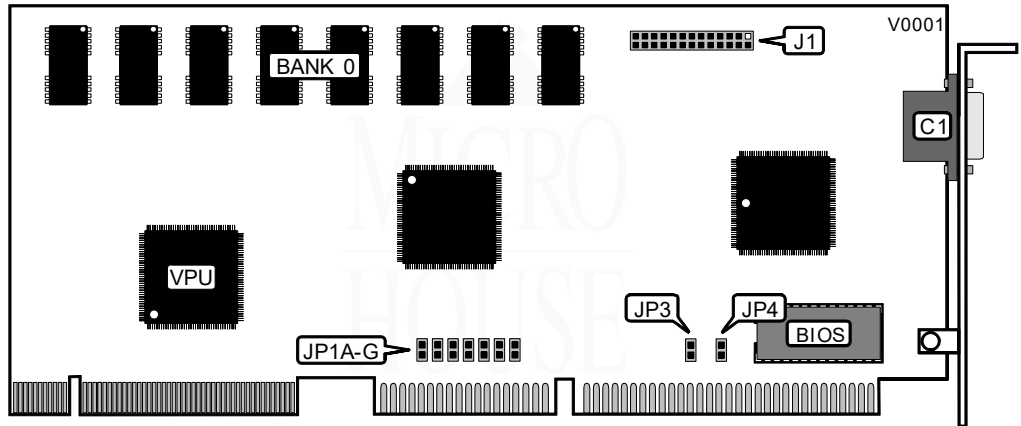


DIAMOND FLOWER, INC.
WG-9000VL

Category	Video
Video Types Supported	XVGA
Video Processor	Weitek 9000
Highest Resolution Supported	1280 x 1024
Data Bus Type	32-bit VESA Local Bus
Memory Type	VRAM
Maximum Onboard Memory	2048KB



CONNECTIONS			
Purpose	Location	Purpose	Location
15 pin analog video port	C1	VESA Feature connector	J1

BIOS MEMORY CONFIGURATION		
Address	JP1/A	JP1/B
C000h	Closed	Closed
D000h	Closed	Open
E000h	Open	Closed
F000h	Open	Open
Note: If VGA card is used in a system with a Weitek 4167 or 3167 math co-processor installed, memory location C000h cannot be selected.		

DISPLAY MEMORY FRAME BUFFER		
Address	JP1/C	JP1/D
16-bit memory access	Open	Closed
8-bit memory access	Closed	Open

VIDEO INTERRUPT SELECTION	
IRQ 2/9	JP1/D
Disabled	Open
Enabled	Closed

Continued on next page . . .

DIAMOND FLOWER, INC.
WG-9000VL

... continued from previous page

WAIT STATE SELECTION	
Zero Wait State	JP1/E
í Disabled	Open
Enabled	Closed

BIOS ROM ACCESS CONFIGURATION	
Address Width	JP1/F
í 16-bit BIOS ROM access	Open
8-bit BIOS ROM access	Closed

SECONDARY VGA CARD CONFIGURATON		
Secondary V(A Card	JP3	JP4
Absent	Closed	Open
Installed	Open	Closed

MISCELLANEOUS TECHNICAL NOTE	
Note: In order to configure resolution and scan rates, the utility software included with the card m st be run.	