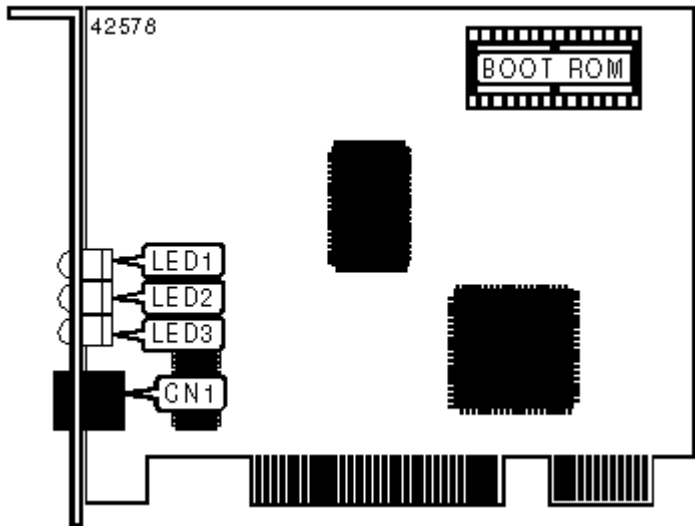


ADAPTEC, INC.

ANA-6911A/TX

Card Type	Network Interface Card
NIC Type	Ethernet
Boot ROM	Available
Network Transfer Rate	200Mbps/100Mbps/20Mbps/10Mbps
Topology	Linear Bus, Star
Wiring Type	Unshielded twisted pair
Data Bus	32-bit PCI



CONNECTIONS

Function	Label
RJ-45 UTP connector	CN1

DIAGNOSTIC LED(S)

LED	Color	Status	Condition
LED1	Green	On	Network connection is good
LED1	Green	Off	Network connection is not good
LED2	Yellow	Blinking	Data is being received
LED2	Yellow	Off	Data is not being received
LED3	Unidentified	On	Operating at 100 Mbps
LED3	Unidentified	Off	Operating at 10 Mbps