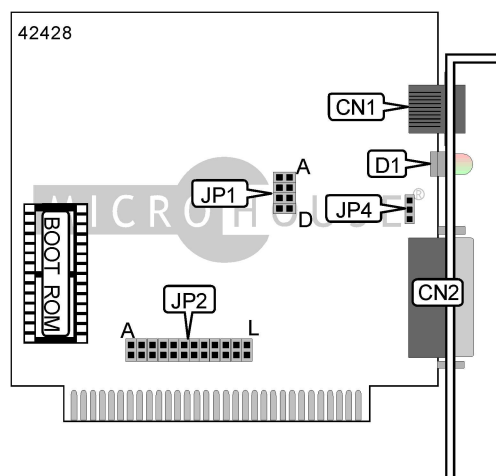


# ACCTON TECHNOLOGY CORPORATION

## ETHERPAIR-8T

Card Type	Network Interface Card
NIC Type	Ethernet
Maximum Onboard Memory	Unidentified
Boot ROM	Available
Network Transfer Rate	10Mbps
Topology	Linear Bus, Star
Wiring Type	RJ-45 Unshielded twisted pair, AUI transceiver via DB-15 port
Data Bus	8-bit ISA



CONNECTIONS			
Function	Label	Function	Label
UTP connector (RJ-45)	CN1	AUI connector	CN2

DMA CHANNEL SELECTION				
Channel	JP2/G	JP2/H	JP2/I	JP2/J
Disabled	Open	Open	Open	Open
1	Closed	Open	Closed	Open
3	Open	Closed	Open	Closed

BASE I/O ADDRESS SELECTION		
Setting	JP2/K	JP2/L
300h	Closed	Closed
320h	Open	Closed
340h	Closed	Open
360h	Open	Open

INTERRUPT SELECTION						
IRQ	JP2/A	JP2/B	JP2/C	JP2/D	JP2/E	JP2/F
2	Closed	Open	Open	Open	Open	Open
3	Open	Closed	Open	Open	Open	Open
4	Open	Open	Closed	Open	Open	Open
5	Open	Open	Open	Closed	Open	Open
6	Open	Open	Open	Open	Closed	Open
7	Open	Open	Open	Open	Open	Closed

Continued on next page. . .

# ACCTON TECHNOLOGY CORPORATION

## ETHERPAIR-8T

. . . continued from previous page

CABLE TYPE SELECTION	
Type	JP4
AUI transceiver via DB-15 port	Pins 2 & 3 closed
Unshielded twisted pair	Pins 1 & 2 closed

BOOT ROM CONFIGURATION	
Setting	JP1/A
Enabled	Closed
Disabled	Open

ROM ADDRESS SELECTION			
Address	JP1/B	JP1/C	JP1/D
C8000h	Closed	Closed	Closed
CC000h	Open	Closed	Closed
D8000h	Closed	Open	Closed
DC000h	Open	Open	Closed
E8000h	Closed	Closed	Open
EC000h	Open	Closed	Open

DIAGNOSTIC LED(S)
Note: The function of the LED is unidentified.