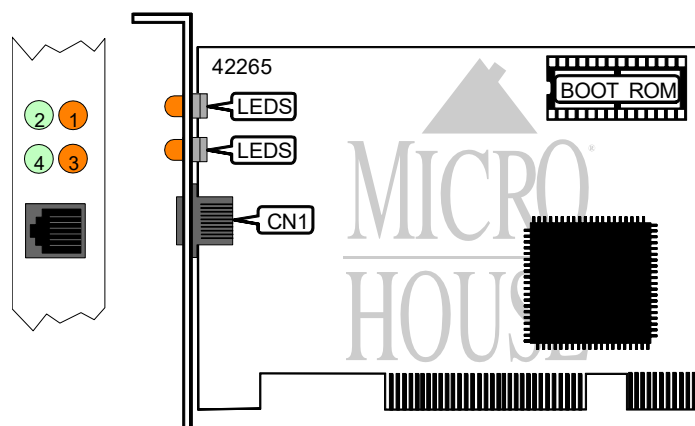


COMPEX, INC.

RL100-TX/PCI

Card Type	Network Interface Card
NIC Type	Ethernet
Maximum Onboard Memory	Unidentified
Boot ROM	Available
Network Transfer Rate	20/200Mbps (Full Duplex)
Topology	Star
Wiring Type	Unshielded twisted pair
Data Bus	32-bit PCI



CONNECTIONS	
Function	Label
UTP via RJ-45 connector	CN1

DIAGNOSTIC LED(S)			
LED	Color	Status	Condition
LED1	Amber	On	Network connection is good
LED1	Amber	Off	Network connection is broken
LED2	Green	On	UTP link is good at 100 MBPS
LED2	Green	Off	UTP link is broken at 100 MBPS
LED3	Amber	Blinking	Data is being received
LED3	Amber	Off	Data is not being received
LED4	Green	Blinking	Data is being transmitted
LED4	Green	Off	Data is not being transmitted