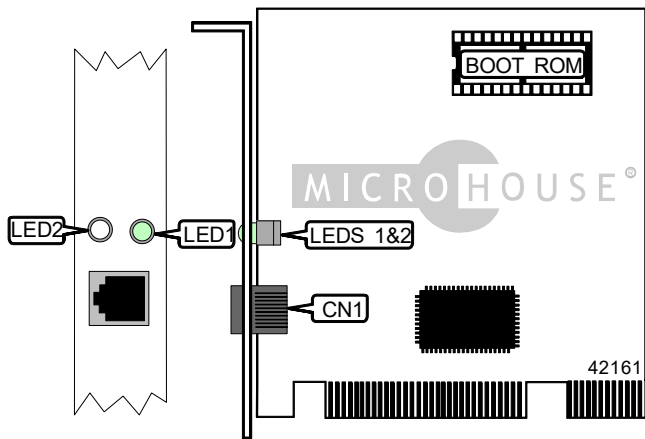


SURECOM TECHNOLOGY CORPORATION

EP-320X-V

Card Type	Network Interface Card
NIC Type	Ethernet
Maximum Onboard Memory	Unidentified
Boot ROM	Available
Network Transfer Rate	10/100Mbps
Topology	Star
Wiring Type	RJ-45 Unshielded twisted pair
Data Bus	32-bit PCI



CONNECTIONS			
Function			Label
RJ-45 UTP connector			CN1

DIAGNOSTIC LED(S)			
LED	Color	Status	Condition
LED1	Green	On	Link is operating at 100Mbps
LED1	Green	Off	Link is operating at 10 Mbps
LED2	Unidentified	On	Data is being received or transmitted
LED2	Unidentified	Off	Data is not being received or transmitted