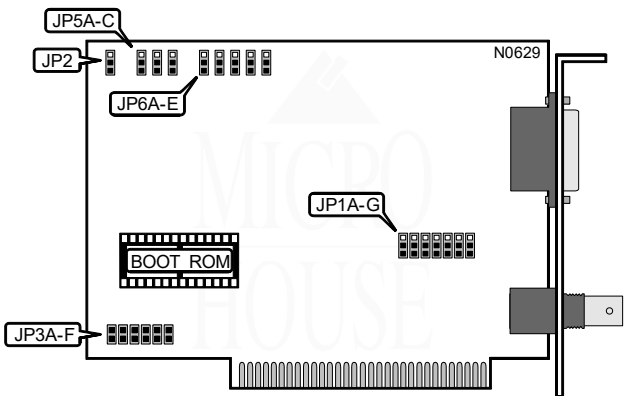


THE NETWORK INTERFACE CARD TECHNICAL GUIDE

QUICK TECHNOLOGY, INC.
ETHER - 8 +

NIC Type	Ethernet
Transfer Rate	10Mbps
Data Bus	8-bit ISA
Topology	Linear bus
Wiring Type	RG58A/U 50ohm coaxial AUI transceiver via DB15
Boot ROM	Available



CABLE TYPE	
Type	JP1A-JP1G
RG58A/U 50ohm coaxial	Pins 1 & 2 closed
AUI transceiver via DB-15 port	Pins 2 & 3 closed

BOOT ROM	
Setting	JP2
Enabled	Pins 1 & 2 closed
Disabled	Pins 2 & 3 closed

INTERRUPT SETTINGS						
IRQ	JP3A	JP3B	JP3C	JP3D	JP3E	JP3F
2	Closed	Open	Open	Open	Open	Open
3	Open	Closed	Open	Open	Open	Open
4	Open	Open	Closed	Open	Open	Open
5	Open	Open	Open	Closed	Open	Open
6	Open	Open	Open	Open	Closed	Open
7	Open	Open	Open	Open	Open	Closed

Continued on next page . . .

QUICK TECHNOLOGY, INC.
ETHER - 8 +

... continued from previous page

BOOT ROM ADDRESS			
Address	JP5A	JP5B	JP5C
C8000h	Pins 2 & 3 closed	Pins 1 & 2 closed	Pins 2 & 3 closed
CC000h	Pins 1 & 2 closed	Pins 1 & 2 closed	Pins 2 & 3 closed
D0000h	Pins 2 & 3 closed	Pins 2 & 3 closed	Pins 1 & 2 closed
D4000h	Pins 1 & 2 closed	Pins 2 & 3 closed	Pins 1 & 2 closed
D8000h	Pins 2 & 3 closed	Pins 1 & 2 closed	Pins 1 & 2 closed
DC000h	Pins 1 & 2 closed	Pins 1 & 2 closed	Pins 1 & 2 closed

BASE I/O ADDRESS					
Address	JP6A	JP6B	JP6C	JP6D	JP6E
100h	Pins 2 & 3	Pins 1 & 2	Pins 2 & 3	Pins 2 & 3	Pins 2 & 3
120h	Pins 2 & 3	Pins 1 & 2	Pins 2 & 3	Pins 2 & 3	Pins 1 & 2
140h	Pins 2 & 3	Pins 1 & 2	Pins 2 & 3	Pins 1 & 2	Pins 2 & 3
160h	Pins 2 & 3	Pins 1 & 2	Pins 2 & 3	Pins 1 & 2	Pins 1 & 2
180h	Pins 2 & 3	Pins 1 & 2	Pins 1 & 2	Pins 2 & 3	Pins 2 & 3
1A0h	Pins 2 & 3	Pins 1 & 2	Pins 1 & 2	Pins 2 & 3	Pins 1 & 2
1C0h	Pins 2 & 3	Pins 1 & 2	Pins 1 & 2	Pins 1 & 2	Pins 2 & 3
1E0h	Pins 2 & 3	Pins 1 & 2	Pins 1 & 2	Pins 1 & 2	Pins 1 & 2
200h	Pins 1 & 2	Pins 2 & 3	Pins 2 & 3	Pins 2 & 3	Pins 2 & 3
220h	Pins 1 & 2	Pins 2 & 3	Pins 2 & 3	Pins 2 & 3	Pins 1 & 2
240h	Pins 1 & 2	Pins 2 & 3	Pins 2 & 3	Pins 1 & 2	Pins 2 & 3
260h	Pins 1 & 2	Pins 2 & 3	Pins 2 & 3	Pins 1 & 2	Pins 1 & 2
280h	Pins 1 & 2	Pins 2 & 3	Pins 1 & 2	Pins 2 & 3	Pins 2 & 3
2A0h	Pins 1 & 2	Pins 2 & 3	Pins 1 & 2	Pins 2 & 3	Pins 1 & 2
2C0h	Pins 1 & 2	Pins 2 & 3	Pins 1 & 2	Pins 1 & 2	Pins 2 & 3
2E0h	Pins 1 & 2	Pins 2 & 3	Pins 1 & 2	Pins 1 & 2	Pins 1 & 2
300h	Pins 1 & 2	Pins 1 & 2	Pins 2 & 3	Pins 2 & 3	Pins 2 & 3
320h	Pins 1 & 2	Pins 1 & 2	Pins 2 & 3	Pins 2 & 3	Pins 1 & 2
340h	Pins 1 & 2	Pins 1 & 2	Pins 2 & 3	Pins 1 & 2	Pins 2 & 3
360h	Pins 1 & 2	Pins 1 & 2	Pins 2 & 3	Pins 1 & 2	Pins 1 & 2
380h	Pins 1 & 2	Pins 1 & 2	Pins 1 & 2	Pins 2 & 3	Pins 2 & 3
3A0h	Pins 1 & 2	Pins 1 & 2	Pins 1 & 2	Pins 2 & 3	Pins 1 & 2
3C0h	Pins 1 & 2	Pins 1 & 2	Pins 1 & 2	Pins 1 & 2	Pins 2 & 3
3E0h	Pins 1 & 2	Pins 1 & 2	Pins 1 & 2	Pins 1 & 2	Pins 1 & 2
Note: Pins designated should be in the closed position.					