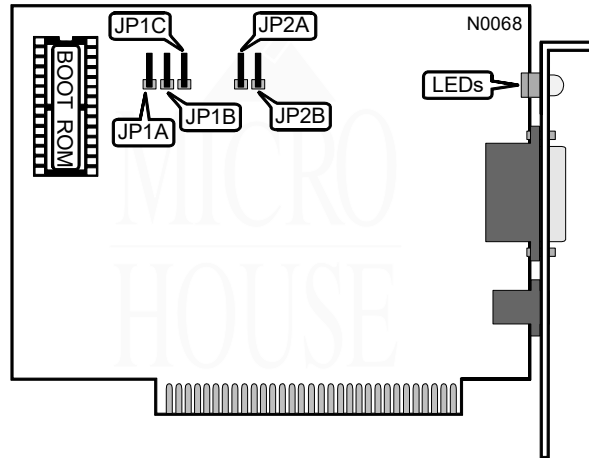


STANDARD MICROSYSTEMS CORPORATION

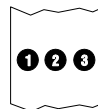
EtherCard PLUS Elite10T

NIC Type Ethernet
Transfer Rate 10Mbps
Data Bus 8-bit ISA
Topology Linear bus
Star
Wiring Type Unshielded twisted pair
 AUI transceiver via DB-15 port
Boot ROM Available



NETWORK CARD CONFIGURATION					
I/O Base Address	IRQ	Base Address	JP1A	JP1B	JP1C
I280h	3	D0000h	Open	Closed	Open
300h	5	CA000h	Open	Open	Closed
Software setup	Software setup	Software setup	Closed	Open	Open

BOOT ROM ADDRESS		
Setting	JP2A	JP2B
(Software Setup/Disabled	Closed	Open
D8000h	Open	Closed



DIAGNOSTIC LED(S)		
LED	Status	Condition
LED1	On	Twisted pair network connection is good
LED1	Off	Twisted pair network connection is broken
LED2	On	Data is being transmitted
LED2	Off	Data is not being transmitted
LED3	On	Data is being received
LED3	Off	Data is not being received

