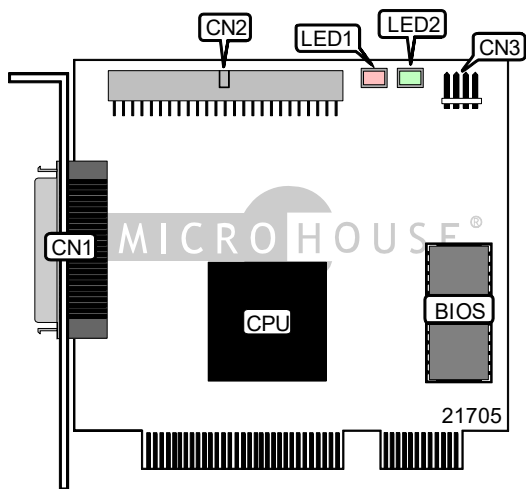


# MYLEX CORPORATION

## BT-930

Card Type	Hard drive controller card
Hard Drives supported	Up to 7 SCSI devices
Floppy drives supported	None
Data Bus	32-bit PCI
Card Size	Half-length, half-height card



CONNECTIONS			
Function	Location	Function	Location
50-pin SCSI connector - external	CN1	4-pin connector - drive active LED	CN3
50-pin SCSI connector - internal	CN2		

DIAGNOSTIC LED(S)	
Note: The function of the LED's is unidentified.	