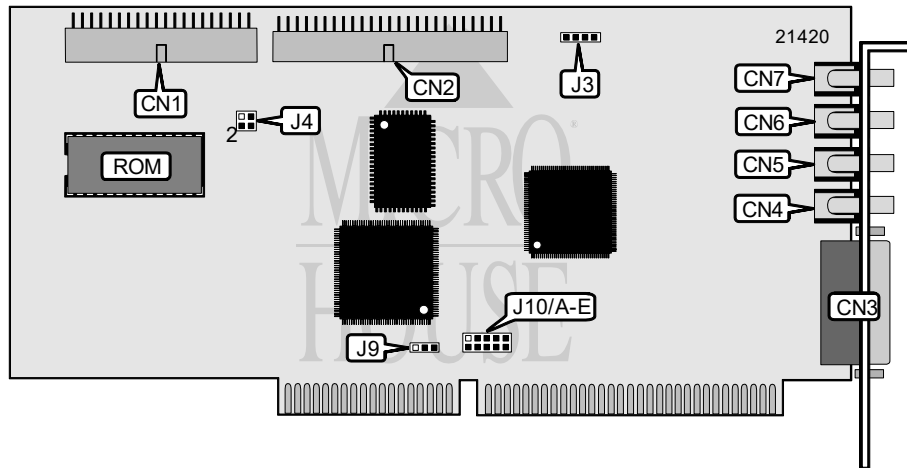


ADAPTEC, INC.

AMM - 1525M

Card Type	Hard drive controller/Sound card
Hard Drives supported	Two IDE/ATAPI drives
Floppy drives supported	Up to 7 SCSI devices
Data Bus	None
Card Size	16-bit ISA
	Three-quarter length, full-height



CONNECTIONS			
Function	Location	Function	Location
40-pin primary IDE/ATAPI connector	CN1	Line in	CN5
50-pin SCSI connector - internal	CN2	Line out	CN6
16-pin game/MIDI port	CN3	Headphones/speakers	CN7
Microphone in	CN4	CD audio in	J3

USER CONFIGURABLE SETTINGS		
Function	Label	Position
IDE port address enabled	J4/pins 1 & 2	Open
IDE port address disabled	J4/pins 1 & 2	Closed
IDE is secondary in system at 170h port address	J4/pins 3 & 4	Closed
IDE is primary in system at 1F0h port address	J4/pins 3 & 4	Open
Sound chip base address is 220h	J9	Pins 1 & 2 closed
Sound chip base address is 240h	J9	Pins 2 & 3 closed
I/O port address is 340h	J10/E	Open
I/O port address is 140h	J10/E	Closed

SCSI INTERRUPT SELECTION				
IRQ	J10/A	J10/B	J10/C	J10/D
IRQ9	Open	Open	Open	Closed
IRQ10	Open	Open	Closed	Open
IRQ11	Open	Closed	Open	Open
IRQ12	Closed	Open	Open	Open

MISCELLANEOUS TECHNICAL NOTES	
SCSI termination on the controller is always enabled and cannot be changed since the controller is always at one end of the SCSI bus.	