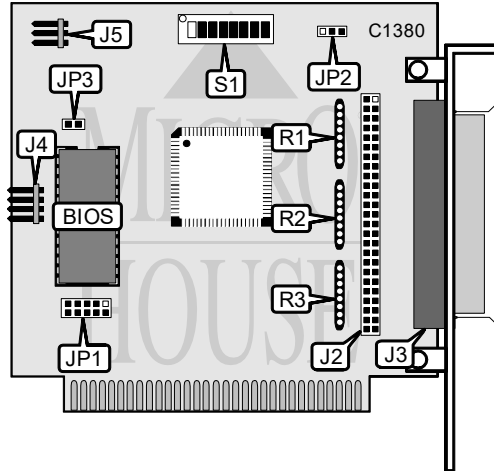


# CMS ENHANCEMENTS, INC.

## HBA - SX0

<b>Data Bus</b>	8-bit ISA
<b>Card Size</b>	Full height, half length
<b>Hard Drives Supported</b>	Up to 7 SCSI devices
<b>Floppy Drives Supported</b>	None



CONNECTIONS			
Function	Label	Function	Label
50-pin SCSI connector - internal	J2	4-pin drive active LED	J4
50-pin SCSI connector - external	J3	3-pin DC power out	J5

USER CONFIGURABLE SETTINGS		
Setting	Label	Position
Termination power supplied to SCSI bus	JP2	Pins 2 & 3 closed
Termination power not supplied to SCSI bus	JP2	Pins 1 & 2 closed
Factory configured - do not alter	JP3	Open
Factory configured - do not alter	S1/4	N/A
BIOS enabled	S1/5	On
BIOS disabled	S1/5	Off
Card generates 1 wait state	S1/6	Off
Card generates 0 wait states	S1/6	On
Factory configured - do not alter	S1/7	N/A
Factory configured - do not alter	S1/8	N/A

BIOS ADDRESS SELECTION			
Setting	S1/1	S1/2	S1/3
C800h	On	Off	Off
CC00h	On	Off	On
D000h	On	On	Off
D400h	On	On	On
D800h	Off	Off	Off
DC00h	Off	Off	On
E000h	Off	On	Off
E400h	Off	On	On

Continued on next page. . .

CMS ENHANCEMENTS, INC.  
HBA-SX0

. . . continued from previous page

INTERRUPT SELECTION	
Setting	JP1
IRQ2	Pins 4 & 6 closed
IRQ3	Pins 2 & 4 closed
IRQ5	Pins 1 & 3 closed
IRQ7	Pins 3 & 5 closed
Disabled	Open

SCSI TERMINATION			
Setting	R1	R2	R3
Terminated	Installed	Installed	Installed
Not terminated	Not installed	Not installed	Not installed