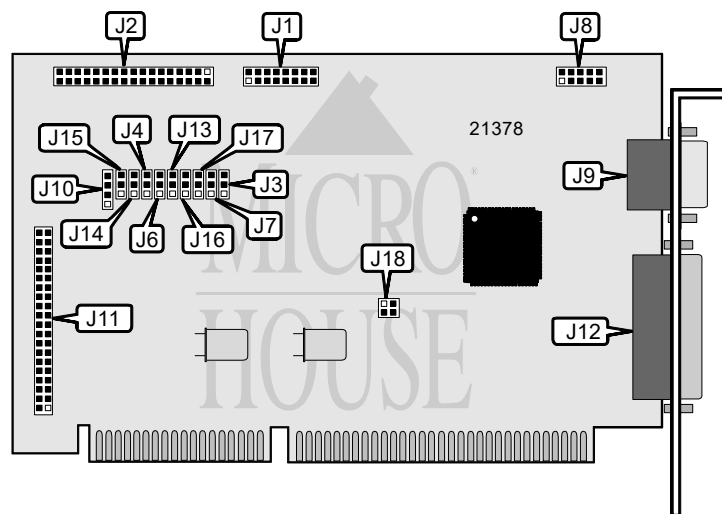


VTECH INDUSTRIES, INC.

LASER AT MULTI-I/O CARD

I/O Options	Floppy drive interface, IDE interface, game port, parallel port, serial ports (2)
Data Bus	16-bit ISA
Card Size	Full height, half length
Hard Drives Supported	Two IDE-AT devices
Floppy Drives Supported	Two 360KB, 720KB, 1.2MB, or 1.44MB drives



CONNECTIONS			
Function	Label	Function	Label
16-pin game port	J1	4-pin drive active LED	J10
34-pin cable connector - floppy drive	J2	40-pin primary IDE(AT) connector	J11
10-pin serial port 2 - internal	J8	25-pin parallel port - external	J12
9-pin serial port 1 - external	J9		

USER CONFIGURABLE SETTINGS		
Setting	Label	Position
í IDE(AT) interface enabled	J3	Pins 1 & 2 closed
IDE(AT) interface disabled	J3	Pins 2 & 3 closed
í Game port enabled	J13	Pins 1 & 2 closed
Game port disabled	J13	Pins 2 & 3 closed
í Factory configured - do not alter	J16	Pins 1 & 2 closed
í Floppy interface enabled	J17	Pins 1 & 2 closed
Floppy interface disabled	J17	Pins 2 & 3 closed

PARALLEL PORT ADDRESS SELECTION	
Setting	J4
278h	Pins 2 & 3 closed
í 378h	Pins 1 & 2 closed
Disabled	Open

Continued on next page. . .

VTECH INDUSTRIES, INC.

LASER AT MULTI-I/O CARD

... continued from previous page

SERIAL PORT ADDRESS SELECTION					
Port 1	Port 2	J15	J14	J6	J7
3F8h (COM1:)	2F8h (COM2:)	Pins 2 & 3	Pins 2 & 3	Pins 2 & 3	Pins 1 & 2
3F8h (COM1:)	3E8h (COM3:)	Pins 2 & 3	Pins 2 & 3	Pins 2 & 3	Pins 2 & 3
3F8h (COM1:)	2E8h (COM4:)	Pins 1 & 2	Pins 1 & 2	Pins 1 & 2	Pins 2 & 3
2F8h (COM2:)	3F8h (COM1:)	Pins 2 & 3	Pins 1 & 2	Pins 1 & 2	Pins 2 & 3
2F8h (COM2:)	3E8h (COM3:)	Pins 1 & 2	Pins 1 & 2	Pins 2 & 3	Pins 1 & 2
2F8h (COM2:)	2E8h (COM4:)	Pins 1 & 2	Pins 1 & 2	Pins 2 & 3	Pins 2 & 3
3E8h (COM3:)	3F8h (COM1:)	Pins 2 & 3	Pins 1 & 2	Pins 2 & 3	Pins 2 & 3
3E8h (COM3:)	2F8h (COM2:)	Pins 1 & 2	Pins 2 & 3	Pins 1 & 2	Pins 2 & 3
3E8h (COM3:)	2E8h (COM4:)	Pins 2 & 3	Pins 1 & 2	Pins 2 & 3	Pins 1 & 2
2E8h (COM4:)	3F8h (COM1:)	Pins 1 & 2	Pins 2 & 3	Pins 2 & 3	Pins 1 & 2
2E8h (COM4:)	2F8h (COM2:)	Pins 2 & 3	Pins 2 & 3	Pins 1 & 2	Pins 1 & 2
2E8h (COM4:)	3E8h (COM3:)	Pins 2 & 3	Pins 2 & 3	Pins 1 & 2	Pins 2 & 3
Disabled	Disabled	N/A	N/A	Open	Open

SERIAL PORT INTERRUPT SELECTION		
Port 1	Port 2	J18
IRQ4	IRQ3	Pins 1 & 2, 3 & 4 closed
IRQ3	IRQ4	Pins 1 & 3, 2 & 4 closed