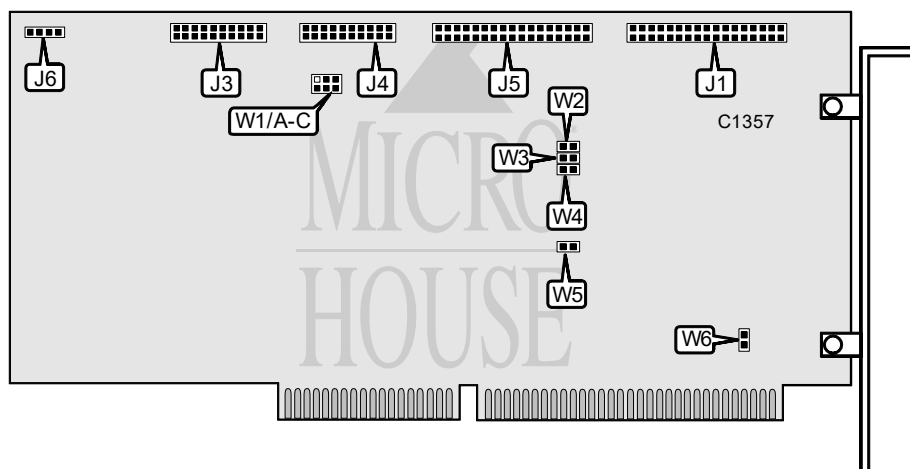


WESTERN DIGITAL CORPORATION

WD1003V-SM1, WD1003V-SM2

Chipset	Western Digital
Data Bus	16-bit ISA
Card Size	Full height, three-quarters length
Hard Drives Supported	Two ST506/412(MFM) devices
Floppy Drives Supported	Two 360KB, 720KB, 1.2MB, or 1.44MB drives (WD1003V-SM2 only)



CONNECTIONS			
Function	Label	Function	Label
34-pin cable connector - floppy drive	J1	34-pin control cable connector - hard drive	J5
20-pin data cable connector - drive 2	J3	4-pin drive active LED	J6
20-pin data cable connector - drive 1	J4		
Note: J1 is not present on WD1003V-SM1 cards.			

USER CONFIGURABLE SETTINGS		
Setting	Label	Position
í Hard drives in latched mode	W1/A	Open
Hard drives in non-latched mode	W1/A	Closed
í Factory configured - do not alter	W1/B	Open
í Hard drive caching enabled	W1/C	Open
Hard drive caching disabled	W1/C	Closed
í Factory configured - do not alter	W2	Open
í Hard drive interface uses primary I/O address	W3	Open
Hard drive interface uses secondary I/O address	W3	Closed
í Floppy drive interface uses primary I/O address	W4	Open
Floppy drive interface uses secondary I/O address	W4	Closed
í Single speed floppy drives attached to card	W5	Open
Dual speed floppy drives attached to card	W5	Closed
í Signal ground not connected to chassis ground	W6	Open
Signal ground connected to chassis ground	W6	Closed