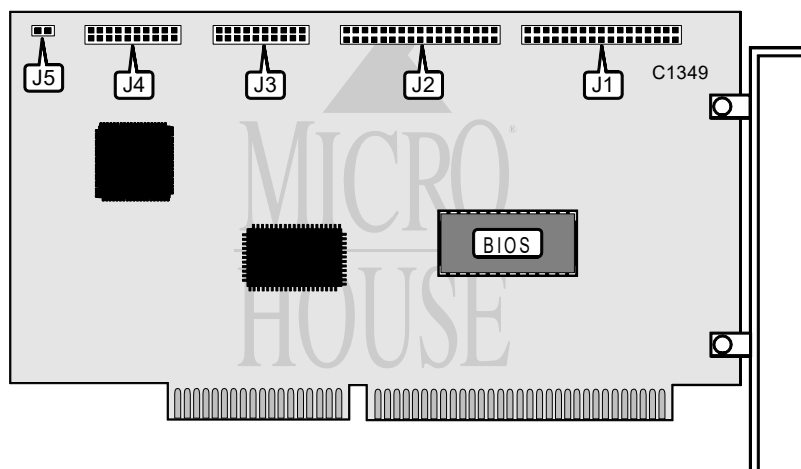


UNIDENTIFIED

HA-110W, HFA-110W

Chipset	Western Digital
Data Bus	16-bit ISA
Card Size	Full height, three-quarters length
Hard Drives Supported	Two ST506/412(MFM) devices
Floppy Drives Supported	Two 360KB, 720KB, 1.2MB, or 1.44MB drives (HFA-110W only)



CONNECTIONS			
Function	Label	Function	Label
34-pin cable connector - floppy drive	J1	20-pin data cable connector - drive 2	J4
34-pin control cable connector - hard drive	J2	2-pin drive active LED	J5
20-pin data cable connector - drive 1	J3		
Note: J1 may not be present on HA-110W cards.			