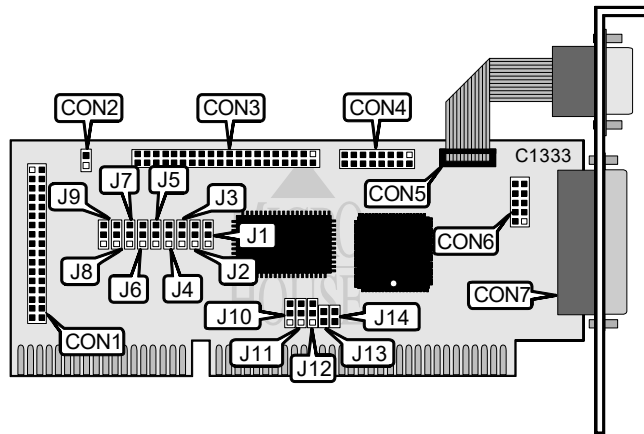


UNIDENTIFIED E7578BF

Chipset	Winbond
Data Bus	16-bit ISA
Card Size	Half height, half length
Hard Drives Supported	Two IDE(AT) devices
Floppy Drives Supported	None



CONNECTIONS			
Function	Label	Function	Label
34-pin cable connector - floppy drive	CON1	9-pin serial port 1 - external	CON5
2-pin drive active LED	CON2	10-pin serial port 2 - internal	CON6
40-pin IDE(AT) connector	CON3	25-pin parallel port - external	CON7
16-pin game port	CON4		

USER CONFIGURABLE SETTINGS		
Setting	Label	Position
í IDE(AT) interface enabled	J1	Pins 2 & 3 closed
IDE(AT) interface disabled	J1	Pins 1 & 2 closed
í Floppy drive interface enabled	J2	Pins 2 & 3 closed
Floppy drive interface disabled	J2	Pins 1 & 2 closed
í Floppy drive order is normal (A:, B:)	J3	Pins 2 & 3 closed
Floppy drive order is reversed (B:, A:)	J3	Pins 1 & 2 closed
í Serial port 1 interrupt is IRQ4	J10	Pins 2 & 3 closed
Serial port 1 interrupt is IRQ3	J10	Pins 1 & 2 closed
í Serial port 2 interrupt is IRQ3	J11	Pins 2 & 3 closed
Serial port 2 interrupt is IRQ4	J11	Pins 1 & 2 closed
í Parallel port interrupt is IRQ7	J12	Pins 1 & 2 closed
Parallel port interrupt is IRQ5	J12	Pins 2 & 3 closed
í Game port enabled	J13	Closed
Game port disabled	J13	Open
í Parallel port is unidirectional	J14	Closed
Parallel port is bidirectional	J14	Open

Continued on next page. . .

UNIDENTIFIED E7578BF

. . . continued from previous page

SERIAL PORT 1 ADDRESS SELECTION		
Setting	J4	J5
í 3F8h (COM1:)	Pins 2 & 3 closed	Pins 1 & 2 closed
3E8h (COM3:)	Pins 1 & 2 closed	Pins 2 & 3 closed
Disabled	Pins 1 & 2 closed	Pins 1 & 2 closed

SERIAL PORT 2 ADDRESS SELECTION		
Setting	J6	J7
í 2F8h (COM2:)	Pins 2 & 3 closed	Pins 1 & 2 closed
2E8h (COM4:)	Pins 1 & 2 closed	Pins 2 & 3 closed
Disabled	Pins 1 & 2 closed	Pins 1 & 2 closed

PARALLEL PORT ADDRESS SELECTION		
Setting	J8	J9
3BCh	Pins 2 & 3 closed	Pins 2 & 3 closed
í 378h	Pins 1 & 2 closed	Pins 2 & 3 closed
278h	Pins 2 & 3 closed	Pins 1 & 2 closed
Disabled	Pins 1 & 2 closed	Pins 1 & 2 closed