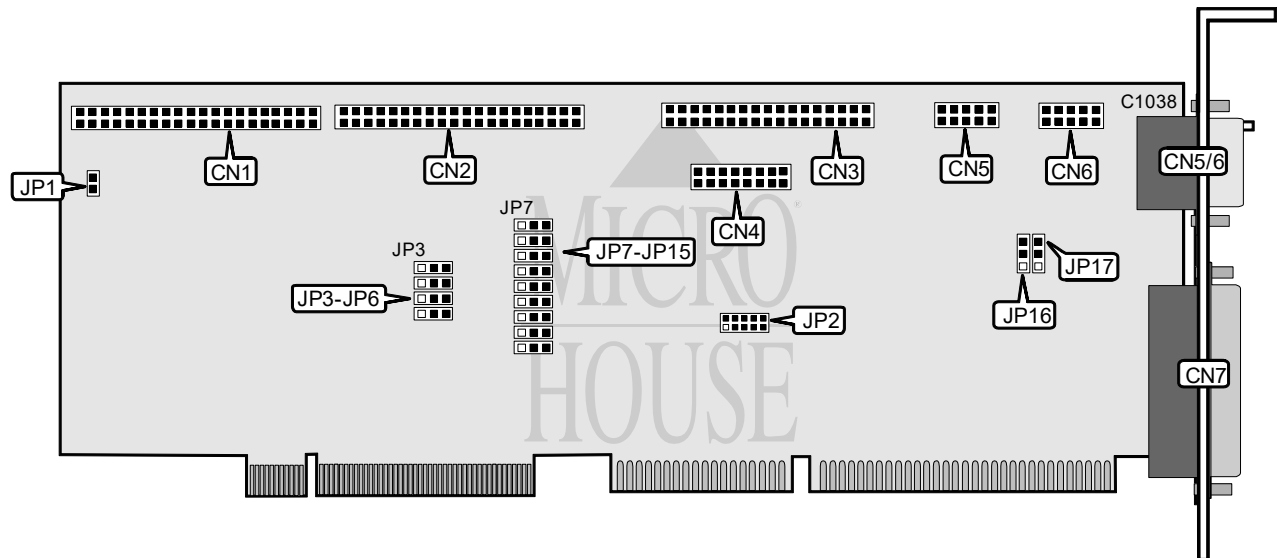


RELIALOGIC CORPORATION PRIVATE, LTD.

CA8972F (REV.2.1)

Data Bus	32-bit VESA Local Bus
Card Size	Full-length, half-height card
Hard Drives supported	Four IDE (AT) drives
Floppy drives supported	Two 360KB, 720KB, 1.2MB, or 1.44MB drives



CONNECTIONS			
Function	Location	Function	Location
40-pin primary IDE(AT) connector	CN1	10-pin serial port 2 - internal	CN5
40-pin secondary IDE(AT) connector	CN2	10-pin serial port 1 - internal	CN6
34-pin cable connector - floppy drive	CN3	25-pin parallel port - external	CN7
16-pin game port	CN4	4-pin connector - drive active LED	JP1

USER CONFIGURABLE SETTINGS			
Function	Label	Position	
Primary IDE(AT) interface enabled	JP5	Pins 1 & 2 closed	
Primary IDE(AT) interface disabled	JP5	Pins 2 & 3 closed	
Secondary IDE(AT) interface enabled	JP6	Pins 1 & 2 closed	
Secondary IDE(AT) interface disabled	JP6	Pins 2 & 3 closed	
Floppy drive interface enabled	JP9	Pins 1 & 2 closed	
Floppy drive interface disabled	JP9	Pins 2 & 3 closed	
Serial port 1 enabled	JP10	Pins 1 & 2 closed	
Serial port 1 disabled	JP10	Pins 2 & 3 closed	
Serial port 1 COM1 select	JP11	Pins 1 & 2 closed	
Serial port 1 COM3 select	JP11	Pins 2 & 3 closed	
Serial port 2 enabled	JP12	Pins 1 & 2 closed	
Serial port 2 disabled	JP12	Pins 2 & 3 closed	
Serial port 2 COM2 select	JP13	Pins 1 & 2 closed	
Serial port 2 COM4 select	JP13	Pins 2 & 3 closed	
Parallel port LPT1 select	JP14	Pins 1 & 2 closed	
Parallel port LPT2 select	JP14	Pins 2 & 3 closed	
Game port enabled	JP15	Pins 1 & 2 closed	
Game port disabled	JP15	Pins 2 & 3 closed	

Continued on next page. . .

RELIALOGIC CORPORATION PRIVATE, LTD.

CA8972F (REV.2.1)

...continued from previous page

DRAM JUMPER CONFIGURATION		
Speed	JP3	JP4
í 0 (Non-ATA or <40 MB)	Pins 2 & 3 closed	Pins 2 & 3 closed
1 (40/50 MHz bus speed)	Pins 1 & 2 closed	Pins 1 & 2 closed
2 (25/33 MHz bus speed)	Pins 2 & 3 closed	Pins 1 & 2 closed
3 (CPUCLK < 20 MHz or EIDE)	Pins 1 & 2 closed	Pins 2 & 3 closed

DMA CHANNEL SELECTION		
Channel	JP16	JP17
í 1	Pins 1 & 2 closed	Pins 1 & 2 closed
3	Pins 2 & 3 closed	Pins 2 & 3 closed

SERIAL PORT 1 INTERRUPT SELECTION	
IRQ	J2
IRQ3	Pins 2 & 4 closed
í IRQ4	Pins 3 & 4 closed
IRQ5	Pins 7 & 9 closed
IRQ7	Pins 9 & 10 closed
IRQ2(9)	Pins 4 & 6 closed

SERIAL PORT 2 INTERRUPT SELECTION	
IRQ	J2
í IRQ3	Pins 1 & 2 closed
IRQ4	Pins 3 & 5 closed
IRQ5	Pins 5 & 7 closed
IRQ2(9)	Pins 5 & 6 closed

PARALLEL PORT INTERRUPT SELECTION	
IRQ	J2
IRQ5	Pins 7 & 8 closed
í IRQ7	Pins 8 & 10 closed
IRQ2(9)	Pins 6 & 8 closed

PARALLEL PORT MODE SELECTION		
Setting	JP7	JP8
í Standard printer	Pins 1 & 2 closed	Pins 2 & 3 closed
ECP	Pins 1 & 2 closed	Pins 1 & 2 closed
EPP	Pins 2 & 3 closed	Pins 1 & 2 closed
Disabled	Pins 2 & 3 closed	Pins 2 & 3 closed