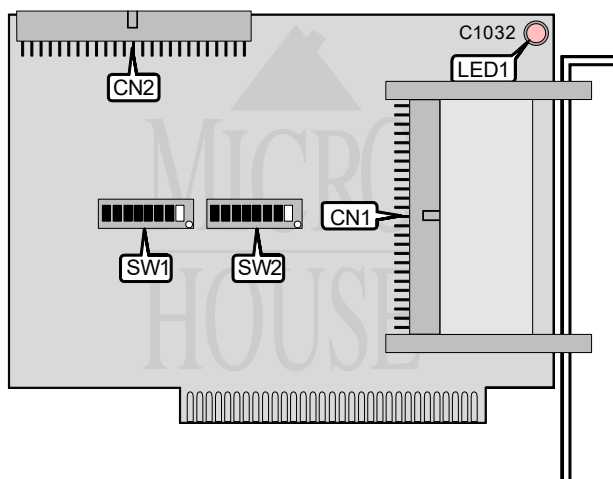


# QUATECH, INC.

## SSD-100

|                         |   |
|-------------------------|---|
| <b>Data Bus</b>         | 8-bit ISA   |
| <b>Card Size</b>        | Quarter-length, full-height                           |
| <b>I/O Options</b>      | PCMCIA socket (2)                                     |
| <b>Drives Supported</b> | PCMCIA memory cards are used as solid state diskettes |
| <b>Tapes Supported</b>  | None  |



| CONNECTIONS   |       |                                 |       |
|---------------|-------|---------------------------------|-------|
| Function      | Label | Function                        | Label |
| PCMCIA socket | CN1   | Cable to external PCMCIA socket | CN2   |

| SHARED RAM ADDRESS |       |       |       |  |
|--------------------|-------|-------|-------|--|
| Setting            | SW2/6 | SW2/7 | SW2/8 |  |
| C0000h             | On    | On    | On    |  |
| C4000h             | On    | On    | Off   |  |
| C8000h             | On    | Off   | On    |  |
| CC000h             | On    | Off   | Off   |  |
| D0000h             | Off   | On    | On    |  |
| D4000h             | Off   | On    | Off   |  |
| D8000h             | Off   | Off   | On    |  |
| DC000h             | Off   | Off   | Off   |  |

| BASE I/O ADDRESS |       |       |       |       |       |       |       |       |
|------------------|-------|-------|-------|-------|-------|-------|-------|-------|
| Setting          | SW1/1 | SW1/2 | SW1/3 | SW1/4 | SW1/5 | SW1/6 | SW1/7 | SW1/8 |
| 0000h            | On    | On    | On    | On    | On    | On    | On    | On    |
| 0008h            | On    | On    | On    | On    | On    | On    | On    | On    |
| 0010h            | On    | On    | On    | On    | On    | On    | On    | On    |
| 0018h            | On    | On    | On    | On    | On    | On    | On    | On    |
| 0020h            | On    | On    | On    | On    | On    | On    | On    | On    |
| 0300h            | On    | On    | On    | On    | On    | On    | Off   | Off   |
| FFD8h            | Off   | Off   | Off   | Off   | Off   | Off   | Off   | Off   |
| FFE0h            | Off   | Off   | Off   | Off   | Off   | Off   | Off   | Off   |
| FFE8h            | Off   | Off   | Off   | Off   | Off   | Off   | Off   | Off   |
| FFF0h            | Off   | Off   | Off   | Off   | Off   | Off   | Off   | Off   |
| FFF8h            | Off   | Off   | Off   | Off   | Off   | Off   | Off   | Off   |

Continued on next page. . .

QUATECH, INC.  
SSD-100

. . . continued from previous page

| BASE I/O ADDRESS (CON'T)   |       |       |       |       |       |
|--|-------|-------|-------|-------|-------|
| Setting  | SW2/1 | SW2/2 | SW2/3 | SW2/4 | SW2/5 |
| 0000h  | On    | On    | On    | On    | On    |
| 0008h  | On    | On    | On    | On    | Off   |
| 0010h  | On    | On    | On    | Off   | On    |
| 0018h  | On    | On    | On    | Off   | Off   |
| 0020h  | On    | On    | Off   | On    | On    |
| 0300h  | On    | On    | On    | On    | On    |
| FFD8h  | Off   | Off   | On    | Off   | Off   |
| FFE0h  | Off   | Off   | Off   | On    | On    |
| FFE8h  | Off   | Off   | Off   | On    | Off   |
| FFF0h  | Off   | Off   | Off   | Off   | On    |
| FFF8h  | Off   | Off   | Off   | Off   | Off   |
| <b>Note:</b> A total of 8191 base address settings are available. The switches are a binary representation of the decimal memory addresses. SW1/1 is the Most Significant Bit and switch SW2/5 is the Least Significant Bit. The switches have the following decimal values: SW1/1=32768, SW1/2=16384, SW1/3=8192, SW1/4=4096, SW1/5=2048, SW1/6=1024, SW1/7=512, SW1/8=256, SW2/1=128, SW2/2=64, SW2/3=32, SW2/4=16, SW2/5=8. Turn off the switches and add the values of the switches that are off to obtain the correct memory address. (Off=1, On=0) |       |       |       |       |       |

| DIAGNOSTIC LED(S) |       |        |                     |
|-------------------|-------|--------|---------------------|
| LED               | Color | Status | Condition           |
| LED1              | Red   | On     | Drive is in use     |
| LED1              | Red   | Off    | Drive is not in use |