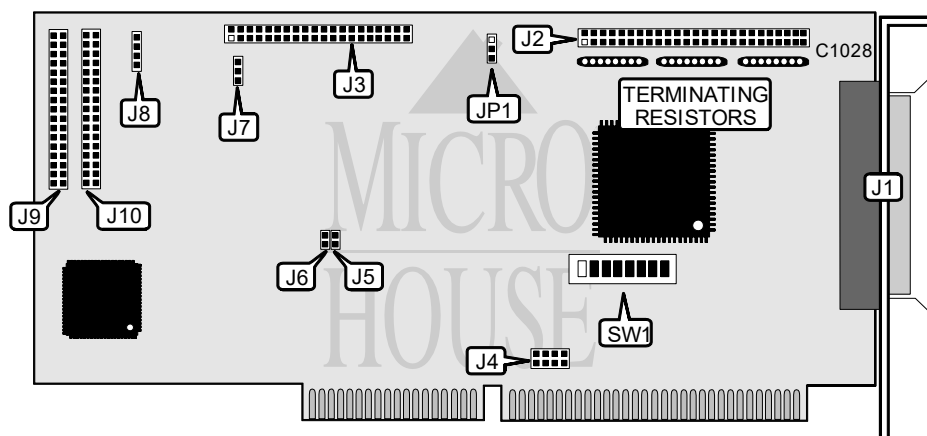


CONTROL CONCEPTS TRIFECTA

Data Bus	16-bit ISA
Card Size	Half-length, full-height card
Hard Drives supported	Two IDE (AT) drives Up to 7 SCSI devices
Floppy drives supported	Two 360KB, 720KB, 1.2MB, or 1.44MB drives (optional four drives)



CONNECTIONS			
Function	Location	Function	Location
50-pin SCSI connector - external	J1	4-pin connector - drive active LED	J8
50-pin SCSI connector - internal	J2	34-pin cable connector - floppy drive	J9
40-pin IDE(AT) connector	J3	34-pin cable connector - floppy drive (optional)	J10

USER CONFIGURABLE SETTINGS			
Function	Label	Position	
Not used	J4	N/A	
IDE(AT) interface enabled	J5	Open	
IDE(AT) interface disabled	J5	Closed	
Floppy drive interface enabled	J6	Closed	
Floppy drive interface disabled	J6	Open	
Not used	J7	N/A	
Board I/O address is 1E0-1EFh	SW1/4	Off	
Board I/O address is 3E0-3EFh	SW1/4	On	
Control Concepts SCSI drive formatting mode select	SW1/8	Off	
Industry Standards SCSI drive formatting mode select	SW1/8	On	

BIOS ADDRESS SELECTION			
Address	SW1/1	SW1/2	SW1/3
C4000-C7FFFh	On	Off	Off
C8000-CBFFFh	Off	On	On
CC000-CFFFFh	Off	Off	Off
D0000-D3FFFh	On	Off	Off
D4000-D7FFFh	Off	On	Off
D8000-DBFFFh	On	On	Off
DC000-DFFFFh	Off	Off	On
Disabled	On	On	On

Continued on next page. . .

CONTROL CONCEPTS TRIFECTA

... continued from previous page

SCSI ID SELECTION			
Setting	SW 1/5	SW 1/6	SW 1/7
0	On	On	On
1	Off	On	On
2	On	Off	On
3	Off	Off	On
4	On	On	Off
5	Off	On	Off
6	On	Off	Off
7	Off	Off	Off