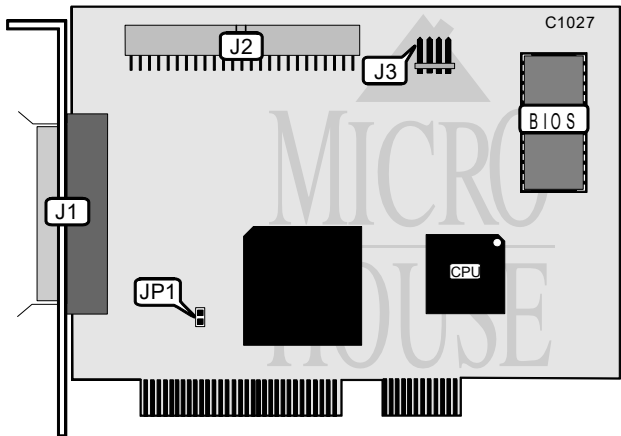


BUSLOGIC, INC.
BT - 948

Data Bus
Card Size
Hard Drives supported
Floppy drives supported

32-bit PCI
Half-length, full-height card
Up to 7 SCSI devices
None



CONNECTIONS			
Function	Location	Function	Location
68-pin SCSI connector - external	J1	4-pin connector - drive active LED	J3
50-pin SCSI connector - internal	J2		

USER CONFIGURABLE SETTINGS			
Function	Label	Position	
í Factory configured - do not alter	JP1	Closed	