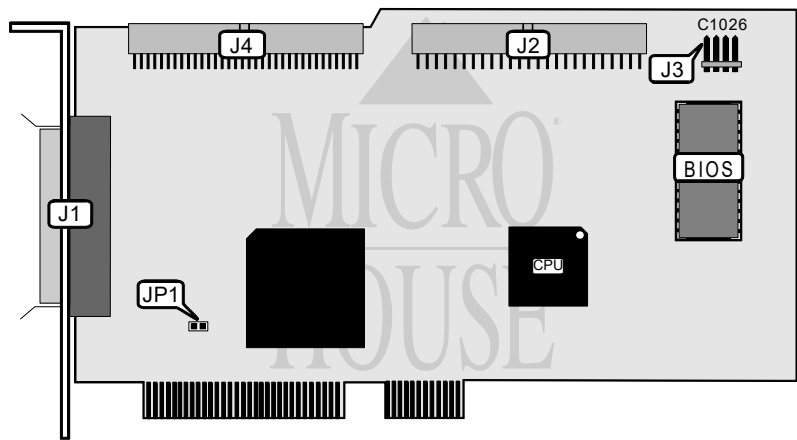


BUSLOGIC, INC.
BT-958

Data Bus	32-bit PCI
Card Size	Half-length, full-height card
Hard Drives supported	Up to 15 SCSI devices
Floppy drives supported	None



CONNECTIONS			
Function	Location	Function	Location
68-pin SCSI connector - external	J1	4-pin connector - drive active LED	J3
50-pin SCSI connector - internal	J2	68-pin SCSI connector - internal	J4

USER CONFIGURABLE SETTINGS		
Function	Label	Position
í Factory configured - do not alter	JP1	Closed