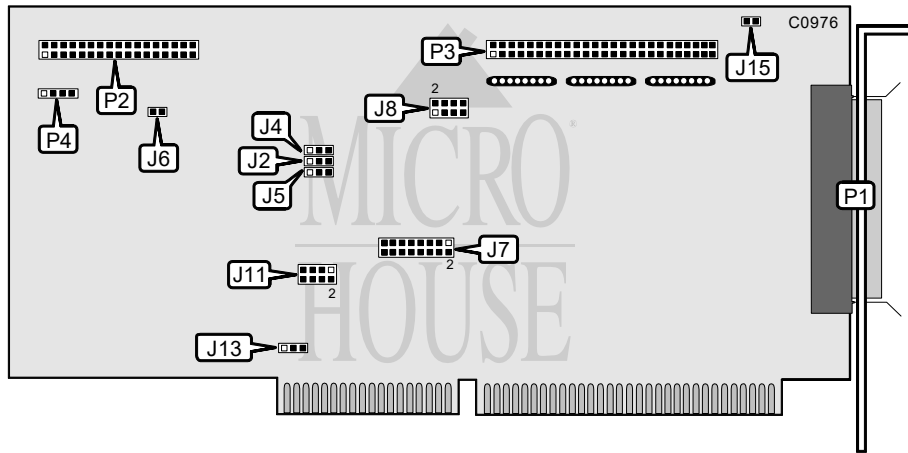


PERCEPTIVE SOLUTIONS, INC. PATHFINDER PSI-2100

Q3/96

Data bus: 16-bit ISA
 Size: Half-length, full-height card
 Hard drive supported: Up to seven Fast SCSI-2 devices
 Floppy drives supported: Two 360KB, 720KB, 1.2MB, or 1.44MB drives



CONNECTIONS	
Function	Location
50-pin SCSI connector - external	P1
34-pin cable connector - floppy drive	P2
50-pin SCSI connector - internal	P3
4-pin connector - drive active LED	P4

USER CONFIGURABLE SETTINGS		
Function	Location	Setting
if Floppy drive interface is primary	J6	Open
Floppy drive interface is secondary	J6	Closed
if Factory configured - do not alter	J7/pins 5 & 6	N/A
if Factory configured - do not alter	J7/pins 7 & 8	N/A
if Hard drive format \leq 1 GB (64 heads x 32 sectors)	J8/pins 1 & 2	Closed
Hard drive format > 1 GB (255 heads x 63 sectors)	J8/pins 1 & 2	Open
if Factory configured - do not alter	J8/pins 3 & 4	N/A
if Synchronous Negotiation enabled	J8/pins 5 & 6	Open
Synchronous Negotiation disabled	J8/pins 5 & 6	Closed
if Factory configured - do not alter	J15	N/A

Continued on next page. . .

PERCEPTIVE SOLUTIONS, INC.

PATHFINDER PSI-2100

...continued from previous page

BIOS ADDRESS SELECTION		
Address	J7/pins 13 & 14	J7/pins 15 & 16
C8000-CFFFFh	Open	Closed
D0000-D7FFFh	Closed	Open
í D8000-DFFFFh	Open	Open

INTERRUPT SELECTION			
INT	J4	J8/pins 7 & 8	J11
10	Pins 1 & 2 closed	Open	Pins 1 & 2 closed
í 11	Pins 1 & 2 closed	Closed	Pins 3 & 4 closed
12	Pins 2 & 3 closed	Closed	Pins 5 & 6 closed
14	Pins 2 & 3 closed	Open	Pins 7 & 8 closed

DMA SELECTION			
Channel	J2	J5	J13
í 6	Pins 1 & 2 closed	Pins 1 & 2 closed	Pins 1 & 2 closed
7	Pins 2 & 3 closed	Pins 2 & 3 closed	Pins 2 & 3 closed

DMA TRANSFER RATE SELECTION				
Rate	J7/pins 1 & 2	J7/pins 3 & 4	J7/pins 9 & 10	J7/pins 11 & 12
í 5.0 MB/sec	Closed	Open	Closed	Open
5.56 MB/sec	Open	Closed	Closed	Open
6.25 MB/sec	Closed	Closed	Closed	Open
7.14 MB/sec	Open	Closed	Open	Closed