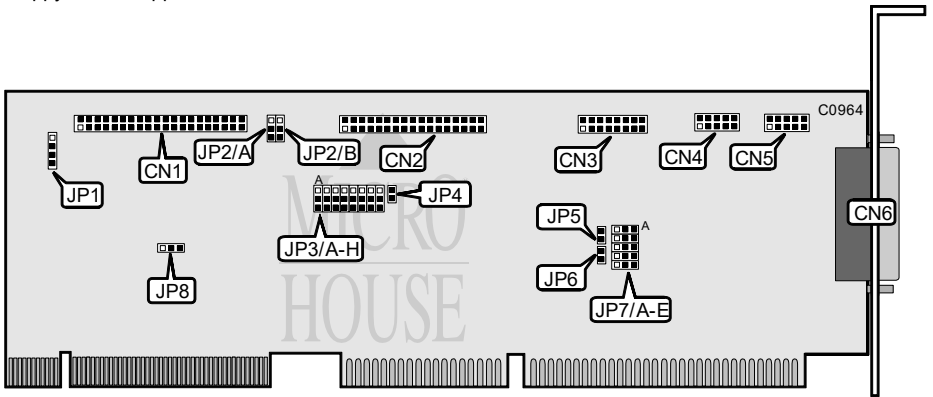


KOUWELL ELECTRONICS CORPORATION
KW-561

Q3/96

Data bus: 32-bit VL-bus
Size: Three-quarter length, half-height card
Hard drive supported: Two IDE(AT) drives
Floppy drives supported: Two 360KB, 720KB, 1.2MB, or 1.44MB drives



CONNECTIONS	
Function	Location
40-pin primary IDE(AT) connector	CN1
34-pin cable connector - floppy drive	CN2
16-pin game port	CN3
10-pin serial port 2 - internal	CN4
10-pin serial port 1 - internal	CN5
25-pin parallel port - external	CN6
4-pin connector - drive active LED	JP1

Continued on next page. . .

KOUWELL ELECTRONICS CORPORATION

KW-561

...continued from previous page

USER CONFIGURABLE SETTINGS		
Function	Location	Setting
Parallel port IRQ 7 select	JP3/G	Pins 2 & 3 closed
Parallel port IRQ 5 select	JP3/G	Pins 1 & 2 closed
Floppy drive interface enabled	JP3/H	Pins 1 & 2 closed
Floppy drive interface disabled	JP3/H	Pins 2 & 3 closed
Parallel port is bi-directional	JP4	Open
Parallel port is uni-directional	JP4	Closed
Game port enabled	JP5	Closed
Game port disabled	JP5	Open
Factory configured - do not alter	JP6	N/A
IDE(AT) interface enabled	JP8	Pins 1 & 2 closed
IDE(AT) interface disabled	JP8	Pins 2 & 3 closed
Note: Location of jumper JP8 is unidentified.		

PARALLEL PORT ADDRESS SELECTION		
LPT	JP3/E	JP3/F
LPT1 (378h)	Pins 1 & 2 closed	Pins 1 & 2 closed
LPT2 (278h)	Pins 1 & 2 closed	Pins 2 & 3 closed
LPT3 (3BCh)	Pins 2 & 3 closed	Pins 1 & 2 closed
Disabled	Pins 2 & 3 closed	Pins 2 & 3 closed

SERIAL PORT 1 ADDRESS SELECTION		
COM	JP3/A	JP3/B
COM1 (3F8h)	Pins 1 & 2 closed	Pins 2 & 3 closed
COM3 (3E8h)	Pins 2 & 3 closed	Pins 1 & 2 closed
COM4 (2E8h)	Pins 1 & 2 closed	Pins 1 & 2 closed
Disabled	Pins 2 & 3 closed	Pins 2 & 3 closed

SERIAL PORT 2 ADDRESS SELECTION		
COM	JP3/C	JP3/D
COM2 (2F8h)	Pins 1 & 2 closed	Pins 2 & 3 closed
COM3 (3E8h)	Pins 1 & 2 closed	Pins 1 & 2 closed
COM4 (2E8h)	Pins 2 & 3 closed	Pins 1 & 2 closed
Disabled	Pins 2 & 3 closed	Pins 2 & 3 closed

Continued on next page. . .

KOUWELL ELECTRONICS CORPORATION

KW-561

. . .continued from previous page

SERIAL PORT 1 INTERRUPT SELECTION					
IRQ	JP7/A	JP7/B	JP7/C	JP7/D	JP7/E
IRQ3	2 & 3	Open	Open	Open	Open
i IRQ4	Open	2 & 3	Open	Open	Open
IRQ5	Open	Open	2 & 3	Open	Open
IRQ9	Open	Open	Open	2 & 3	Open
IRQ12	Open	Open	Open	Open	2 & 3
Note: Pins designated must be in the closed position.					

SERIAL PORT 2 INTERRUPT SELECTION					
IRQ	JP7/A	JP7/B	JP7/C	JP7/D	JP7/E
i IRQ3	1 & 2	Open	Open	Open	Open
IRQ4	Open	1 & 2	Open	Open	Open
IRQ5	Open	Open	1 & 2	Open	Open
IRQ9	Open	Open	Open	1 & 2	Open
IRQ12	Open	Open	Open	Open	1 & 2
Note: Pins designated must be in the closed position.					

IDE DRIVE SPEED SELECTION		
Setting	JP2/A	JP2/B
i Speed 0 / Slow	Pins 1 & 2 closed	Pins 1 & 2 closed
Speed 2	Pins 2 & 3 closed	Pins 1 & 2 closed
Speed 4	Pins 1 & 2 closed	Pins 2 & 3 closed
Speed 6 / Fast	Pins 2 & 3 closed	Pins 2 & 3 closed