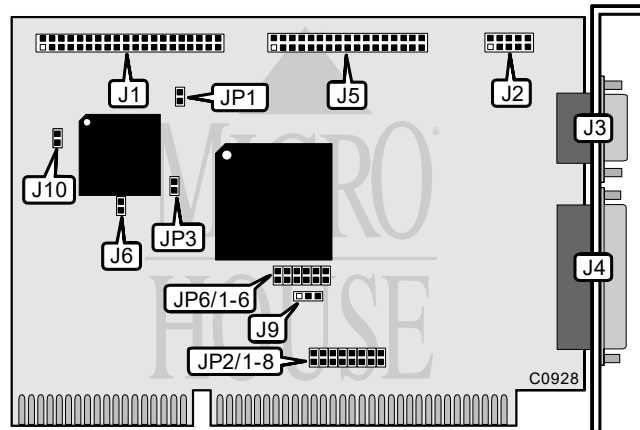


AQUARIUS SYSTEMS, INC. AT BUS I/O

Q2/96

Data bus: 16-bit ISA
 Size: Half-length, full-height card
 Hard drive supported: Two IDE(AT) drives
 Floppy drives supported: Two 360KB, 720KB, 1.2MB, or 1.44MB drives



CONNECTIONS	
Function	Location
40-pin IDE(AT) connector	J1
10-pin serial port 2 - internal	J2
9-pin serial port 1 - external	J3
25-pin parallel port - external	J4
34-pin cable connector - floppy drive	J5
2-pin connector - drive active LED	J10

USER CONFIGURABLE SETTINGS		
Function	Location	Setting
Floppy transfer rate is 300 KB/s	J6	closed
Floppy transfer rate is 250 KB/s	J6	open
IOCHRDY signal enabled	JP1	closed
IOCHRDY signal disabled	JP1	open
Floppy drive interface enabled	JP3	closed
Floppy drive interface disabled	JP3	open
IDE(AT) interface IRQ14 enabled	J9	pins 1 & 2 closed
IDE(AT) interface disabled	J9	pins 2 & 3 closed

Continued on next page. . .

AQUARIUS SYSTEMS, INC.

AT BUS I/O KARTE

...continued from previous page

PARALLEL PORT ADDRESS SELECTION		
LPT	JP6/5	JP6/6
LPT1 (378h)	closed	open
LPT2 (278h)	open	closed

SERIAL PORT 1 ADDRESS SELECTION		
COM	JP6/1	JP6/3
COM1 (3F8h)	closed	open
COM1 (3E8h)	open	closed

SERIAL PORT 2 ADDRESS SELECTION		
COM	JP6/2	JP6/4
COM2 (2F8h)	closed	open
COM2 (2E8h)	open	closed

SERIAL PORT 1 INTERRUPT SELECTION			
IRQ	JP2/1	JP2/2	JP2/3
IRQ4	closed	open	open
IRQ5	open	closed	open
IRQ9	open	open	closed

SERIAL PORT 2 INTERRUPT SELECTION			
IRQ	JP2/4	JP2/5	JP2/6
IRQ3	closed	open	open
IRQ5	open	open	closed
IRQ9	open	closed	open

PARALLEL PORT INTERRUPT SELECTION		
IRQ	JP2/7	JP2/8
IRQ5	closed	open
IRQ7	open	closed