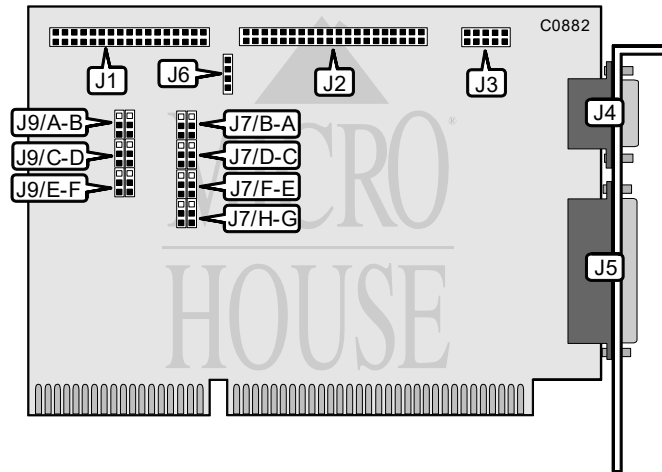


UNIDENTIFIED IDE PLUS

Q4/95

Data bus: 16-bit ISA
 Size: Half-length, full-height card
 Hard drive supported: Two IDE(AT) drives
 Floppy drives supported: Two 360KB, 720KB, 1.2MB, or 1.44MB drives



CONNECTIONS	
Function	Location
34-pin cable connector - floppy drive	J1
40-pin IDE(AT) connector	J2
10-pin serial port 2 - internal	J3
9-pin serial port 1 - external	J4
25-pin parallel port - external	J5
4-pin connector - drive active LED	J6

USER CONFIGURABLE SETTINGS		
Function	Location	Setting
f Floppy drive interface address primary	J9/A	pins 1 & 2 closed
Floppy drive interface address secondary	J9/A	pins 2 & 3 closed
f IDE(AT) interface address primary	J9/B	pins 1 & 2 closed
IDE(AT) interface address secondary	J9/B	pins 2 & 3 closed
f Parallel port interrupt select IRQ7	J9/C	pins 1 & 2 closed
Parallel port interrupt select IRQ5	J9/C	pins 2 & 3 closed
f IDE(AT) interface interrupt IRQ14	J9/D	pins 1 & 2 closed
IDE(AT) interface interrupt IRQ15	J9/D	pins 2 & 3 closed

Continued on next page. . .

UNIDENTIFIED IDE PLUS

...continued from previous page

USER CONFIGURABLE SETTINGS(CONTINUED)		
Function	Location	Setting
í Serial port 1 interrupt select IRQ4	J9/E	pins 1 & 2 closed
Serial port 1 interrupt select IRQ7	J9/E	pins 2 & 3 closed
í Serial port 2 interrupt select IRQ3	J9/F	pins 1 & 2 closed
Serial port 2 interrupt select IRQ5	J9/F	pins 2 & 3 closed
í Serial port 1 enabled	J7/A	pins 1 & 2 closed
Serial port 1 disabled	J7/A	pins 2 & 3 closed
í Serial port 2 enabled	J7/B	pins 1 & 2 closed
Serial port 2 disabled	J7/B	pins 2 & 3 closed
í Serial port 1 address COM1	J7/C	pins 1 & 2 closed
Serial port 1 address COM3	J7/C	pins 2 & 3 closed
í Serial port 2 address COM2	J7/D	pins 1 & 2 closed
Serial port 2 address COM4	J7/D	pins 2 & 3 closed
í Parallel port enabled	J7/E	pins 1 & 2 closed
Parallel port disabled	J7/E	pins 2 & 3 closed
í IDE(AT) interface enabled	J7/F	pins 1 & 2 closed
IDE(AT) interface disabled	J7/F	pins 2 & 3 closed
í Parallel port address 378h select	J7/G	pins 1 & 2 closed
Parallel port address 278h select	J7/G	pins 2 & 3 closed
í Floppy drive interface enabled	J7/H	pins 1 & 2 closed
Floppy drive interface disabled	J7/H	pins 2 & 3 closed