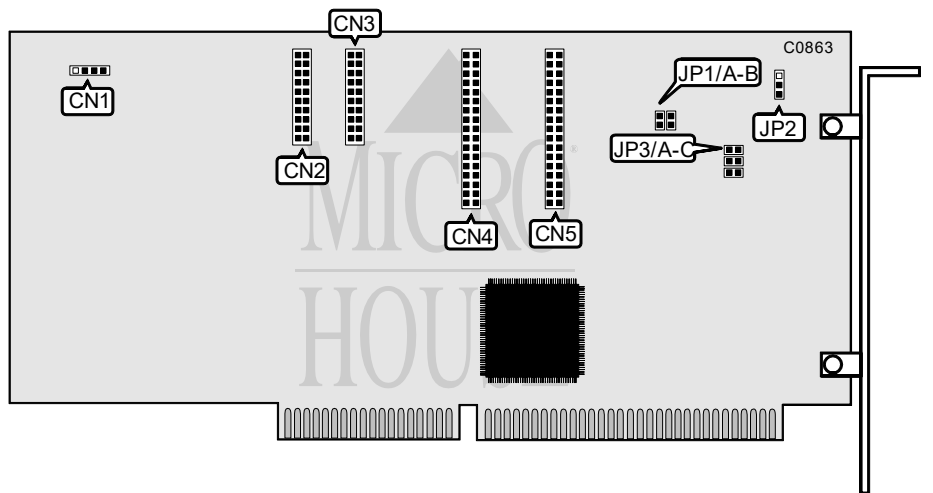


80 DATA  
WA6

Q4/95

Data bus: 16-bit ISA  
Size: Three-quarter length, full-height card  
Hard drive supported: Two ST506/412 drives (encoding method unidentified)  
Floppy drives supported: Two 360KB, 720KB drives



CONNECTIONS	
Function	Location
4-pin connector - drive active LED	CN1
20-pin data cable connector - drive 1	CN2
20-pin data cable connector - drive 0	CN3
34-pin control cable connector - hard drive	CN4
34-pin control cable connector - floppy drive	CN5

USER CONFIGURABLE SETTINGS		
Function	Location	Setting
Hard drive uses primary address	JP1/A	open
Hard drive uses alternate address	JP1/A	closed
Floppy drive uses primary address	JP1/B	open
Floppy drive uses alternate address	JP1/B	closed
Floppy drive 360 RPM mode enabled	JP2	pins 1 & 2 closed
Floppy drive 300 RPM mode enabled	JP2	pins 2 & 3 closed
Latched mode enabled	JP3/A	open
Non-latched mode enabled	JP3/A	closed
4 byte error correction enabled	JP3/B	open
7 byte error correction enabled	JP3/B	closed
Caching enabled	JP3/C	open
Caching disabled	JP3/C	closed